



**ELECTRONIC COPY**

LG757507214  
Report verification at igi.org



December 17, 2025  
IGI Report Number **LG757507214**  
Description **LABORATORY GROWN DIAMOND**  
Shape and Cutting Style **EMERALD CUT**  
Measurements **6.42 X 4.52 X 3.45 MM**  
**GRADING RESULTS**  
Carat Weight **1.00 CARAT**  
Color Grade **FANCY INTENSE BROWNISH PINK**  
Clarity Grade **VS 2**

December 17, 2025  
IGI Report Number **LG757507214**  
Description **LABORATORY GROWN DIAMOND**  
Shape and Cutting Style **EMERALD CUT**  
Measurements **6.42 X 4.52 X 3.45 MM**

**GRADING RESULTS**

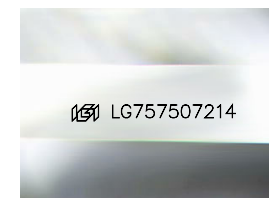
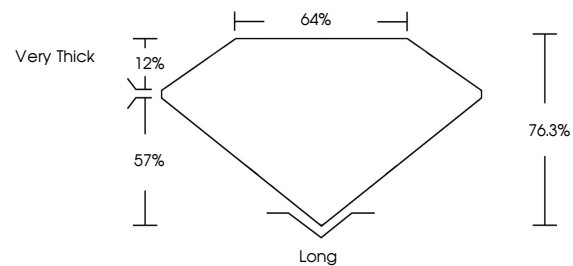
Carat Weight **1.00 CARAT**  
Color Grade **FANCY INTENSE BROWNISH PINK**  
Clarity Grade **VS 2**

**ADDITIONAL GRADING INFORMATION**

Polish **VERY GOOD**  
Symmetry **GOOD**  
Fluorescence **SLIGHT**  
Inscription(s) **IGI LG757507214**

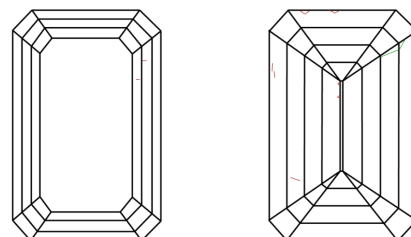
Comments: This Laboratory Grown Diamond was created by Chemical Vapor Deposition (CVD) growth process. Indications of post-growth treatment.

**PROPORTIONS**



Sample Image Used

**CLARITY CHARACTERISTICS**



**KEY TO SYMBOLS**

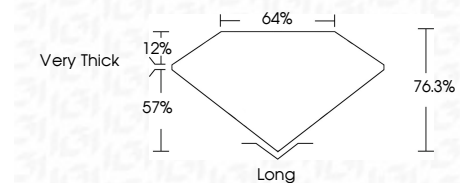
Red symbols indicate internal characteristics.  
Green symbols indicate external characteristics.

**COLOR**

D E F G H I J Faint Very Light Light

**CLARITY**

FL	IF	VS <sup>1-2</sup>	VS <sup>1-2</sup>	SI <sup>1-2</sup>	I <sup>1-3</sup>
Flawless	Internally Flawless	Very Very Slightly Included	Very Slightly Included	Slightly Included	Included



**ADDITIONAL GRADING INFORMATION**

Polish **VERY GOOD**  
Symmetry **GOOD**  
Fluorescence **SLIGHT**  
Inscription(s) **IGI LG757507214**  
Comments: This Laboratory Grown Diamond was created by Chemical Vapor Deposition (CVD) growth process. Indications of post-growth treatment.



December 17, 2025  
IGI Report No. **LG757507214**  
**EMERALD CUT**  
1.00 CARAT  
Carat Weight  
Color Grade **FANCY INTENSE BROWNISH PINK**  
Clarity Grade **VS 2**  
Depth **76.3%**  
Table **64%**  
Girdle **Very Thick**  
Culet **Long**  
Polish **VERY GOOD**  
Symmetry **GOOD**  
Fluorescence **SLIGHT**  
Inscription(s) **IGI LG757507214**  
Comments: This Laboratory Grown Diamond was created by Chemical Vapor Deposition (CVD) growth process. Indications of post-growth treatment.