



**ELECTRONIC COPY**

LG757507050  
Report verification at igi.org



December 20, 2025  
IGI Report Number **LG757507050**  
Description **LABORATORY GROWN DIAMOND**  
Shape and Cutting Style **ROUND BRILLIANT**  
Measurements **6.37 - 6.42 X 3.96 MM**  
**GRADING RESULTS**  
Carat Weight **1.00 CARAT**  
Color Grade **FANCY DEEP ORANGE**  
Clarity Grade **VS 2**  
Cut Grade **IDEAL**

December 20, 2025  
IGI Report Number **LG757507050**  
Description **LABORATORY GROWN DIAMOND**  
Shape and Cutting Style **ROUND BRILLIANT**  
Measurements **6.37 - 6.42 X 3.96 MM**

**GRADING RESULTS**

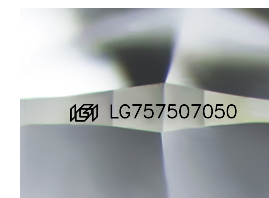
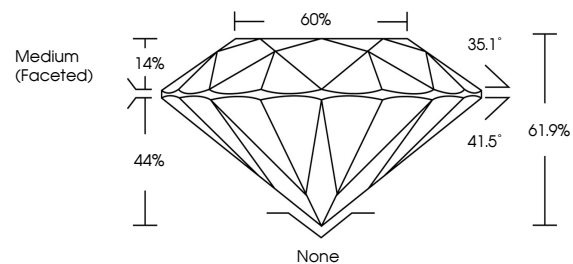
Carat Weight **1.00 CARAT**  
Color Grade **FANCY DEEP ORANGE**  
Clarity Grade **VS 2**  
Cut Grade **IDEAL**

**ADDITIONAL GRADING INFORMATION**

Polish **VERY GOOD**  
Symmetry **VERY GOOD**  
Fluorescence **NONE**  
Inscription(s) **IGI LG757507050**

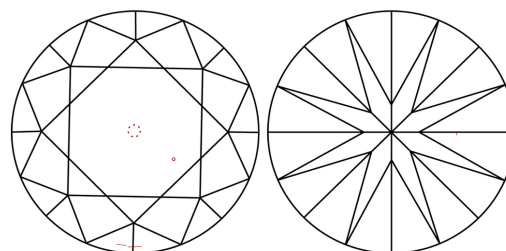
Comments: This Laboratory Grown Diamond was created by Chemical Vapor Deposition (CVD) growth process.  
Indications of post-growth treatment.

**PROPORTIONS**



Sample Image Used

**CLARITY CHARACTERISTICS**



**KEY TO SYMBOLS**

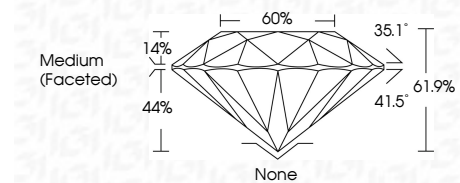
Red symbols indicate internal characteristics.  
Green symbols indicate external characteristics.

**COLOR**

D E F G H I J Faint Very Light Light

**CLARITY**

FL	IF	VS <sup>1-2</sup>	VS <sup>1-2</sup>	SI <sup>1-2</sup>	I <sup>1-3</sup>
Flawless	Internally Flawless	Very Very Slightly Included	Very Slightly Included	Slightly Included	Included



**ADDITIONAL GRADING INFORMATION**

Polish **VERY GOOD**  
Symmetry **VERY GOOD**  
Fluorescence **NONE**  
Inscription(s) **IGI LG757507050**  
Comments: This Laboratory Grown Diamond was created by Chemical Vapor Deposition (CVD) growth process.  
Indications of post-growth treatment.



**IGI**



December 20, 2025  
IGI Report No LG757507050  
**ROUND BRILLIANT**  
6.37 - 6.42 X 3.96 MM  
1.00 CARAT  
FANCY DEEP ORANGE  
VS 2  
IDEAL  
61.9%  
66%  
Medium (Faceted)  
None  
VERY GOOD  
VERY GOOD  
NONE  
NONE  
IGI LG757507050  
Comments: This Laboratory Grown Diamond was created by Chemical Vapor Deposition (CVD) growth process.  
Indications of post-growth treatment.