



**ELECTRONIC COPY**

LG757507044  
Report verification at igi.org



December 20, 2025

IGI Report Number **LG757507044**

Description **LABORATORY GROWN DIAMOND**

Shape and Cutting Style **EMERALD CUT**

Measurements **8.53 X 5.52 X 3.32 MM**

**GRADING RESULTS**

Carat Weight **1.65 CARAT**

Color Grade **FANCY VIVID PINK**

Clarity Grade **VVS 2**

December 20, 2025  
IGI Report Number **LG757507044**  
Description **LABORATORY GROWN DIAMOND**  
Shape and Cutting Style **EMERALD CUT**  
Measurements **8.53 X 5.52 X 3.32 MM**

**GRADING RESULTS**

Carat Weight **1.65 CARAT**

Color Grade **FANCY VIVID PINK**

Clarity Grade **VVS 2**

**ADDITIONAL GRADING INFORMATION**

Polish **EXCELLENT**

Symmetry **EXCELLENT**

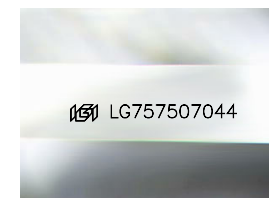
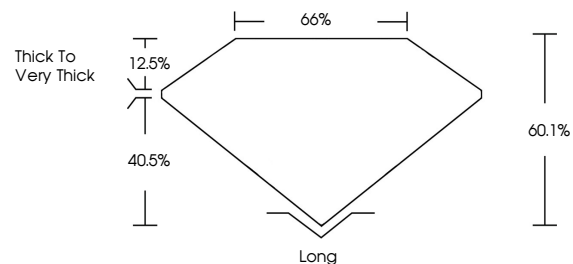
Fluorescence **SLIGHT**

Inscription(s) **LG757507044**

Comments: This Laboratory Grown Diamond was created by Chemical Vapor Deposition (CVD) growth process.  
Indications of post-growth treatment.

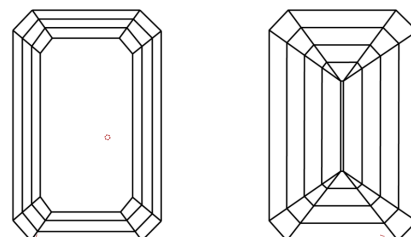
Secondary color: Brown

**PROPORTIONS**



Sample Image Used

**CLARITY CHARACTERISTICS**



**KEY TO SYMBOLS**

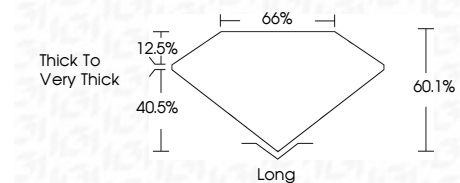
Red symbols indicate internal characteristics.  
Green symbols indicate external characteristics.

**COLOR**

D E F G H I J Faint Very Light Light

**CLARITY**

FL	IF	VVS <sup>1-2</sup>	VS <sup>1-2</sup>	SI <sup>1-2</sup>	I <sup>1-3</sup>
Flawless	Internally Flawless	Very Very Slightly Included	Very Slightly Included	Slightly Included	Included



**ADDITIONAL GRADING INFORMATION**

Polish **EXCELLENT**

Symmetry **EXCELLENT**

Fluorescence **SLIGHT**

Inscription(s) **LG757507044**

Comments: This Laboratory Grown Diamond was created by Chemical Vapor Deposition (CVD) growth process.  
Indications of post-growth treatment.

Secondary color: Brown



**IGI**



December 20, 2025  
IGI Report No **LG757507044**  
**EMERALD CUT**  
**1.65 CARAT**  
Carat Weight **FANCY VIVID PINK**  
Color Grade **VVS 2**  
Depth **60.1%**  
Table **12.5%**  
Girdle **Thick to Very Thick**  
Culet **Long**  
Polish **EXCELLENT**  
Symmetry **EXCELLENT**  
Fluorescence **SLIGHT**  
Inscription(s) **LG757507044**

Comments: This Laboratory Grown Diamond was created by Chemical Vapor Deposition (CVD) growth process.  
Indications of post-growth treatment.  
Secondary color: Brown