



ELECTRONIC COPY

LG757507034
Report verification at igi.org



December 19, 2025
IGI Report Number **LG757507034**
Description **LABORATORY GROWN DIAMOND**
Shape and Cutting Style **BAGUETTE**
Measurements **9.53 X 3.70 X 2.57 MM**
GRADING RESULTS
Carat Weight **1.01 CARAT**
Color Grade **FANCY INTENSE PINK**
Clarity Grade **SI 2**

December 19, 2025
IGI Report Number **LG757507034**
Description **LABORATORY GROWN DIAMOND**
Shape and Cutting Style **BAGUETTE**
Measurements **9.53 X 3.70 X 2.57 MM**

GRADING RESULTS

Carat Weight **1.01 CARAT**
Color Grade **FANCY INTENSE PINK**
Clarity Grade **SI 2**

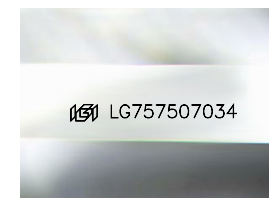
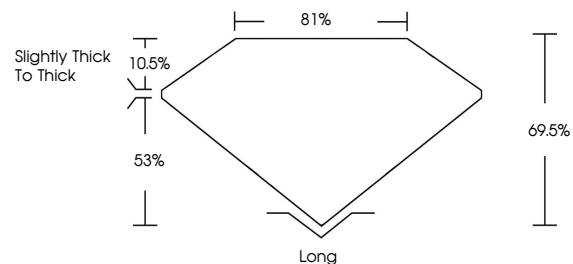
ADDITIONAL GRADING INFORMATION

Polish **EXCELLENT**
Symmetry **VERY GOOD**
Fluorescence **SLIGHT**
Inscription(s) **LG757507034**

Comments: This Laboratory Grown Diamond was created by Chemical Vapor Deposition (CVD) growth process.
Indications of post-growth treatment.

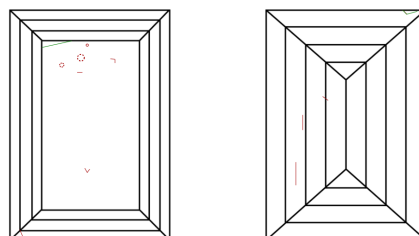
Secondary color: Orange

PROPORTIONS



Sample Image Used

CLARITY CHARACTERISTICS



KEY TO SYMBOLS

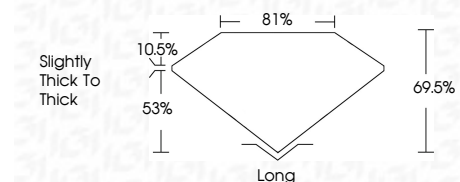
Red symbols indicate internal characteristics.
Green symbols indicate external characteristics.

COLOR

D E F G H I J Faint Very Light Light

CLARITY

FL	IF	VS ¹⁻²	VS ¹⁻²	SI ¹⁻²	I ¹⁻³
Flawless	Internally Flawless	Very Very Slightly Included	Very Slightly Included	Slightly Included	Included



ADDITIONAL GRADING INFORMATION

Polish **EXCELLENT**
Symmetry **VERY GOOD**
Fluorescence **SLIGHT**
Inscription(s) **LG757507034**
Comments: This Laboratory Grown Diamond was created by Chemical Vapor Deposition (CVD) growth process.
Indications of post-growth treatment.
Secondary color: Orange



December 19, 2025
IGI Report No **LG757507034**
BAGUETTE
9.53 X 3.70 X 2.57 MM
1.01 CARAT
FANCY INTENSE PINK
SI 2
69.5%
81%
Slightly thick to thick
Long
EXCELLENT
VERY GOOD
SLIGHT
 LG757507034
Comments: This Laboratory Grown Diamond was created by Chemical Vapor Deposition (CVD) growth process.
Indications of post-growth treatment.
Secondary color: Orange