



ELECTRONIC COPY

LG757506980
Report verification at igi.org



December 20, 2025
IGI Report Number **LG757506980**
Description **LABORATORY GROWN DIAMOND**
Shape and Cutting Style **EMERALD CUT**
Measurements **7.40 X 5.19 X 3.44 MM**
GRADING RESULTS
Carat Weight **1.30 CARAT**
Color Grade **FANCY VIVID BROWNISH PINK**
Clarity Grade **VVS 2**

LABORATORY GROWN DIAMOND REPORT

December 20, 2025
IGI Report Number **LG757506980**
Description **LABORATORY GROWN DIAMOND**
Shape and Cutting Style **EMERALD CUT**
Measurements **7.40 X 5.19 X 3.44 MM**

GRADING RESULTS

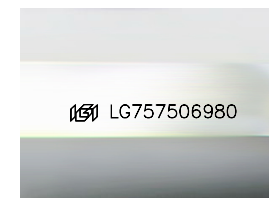
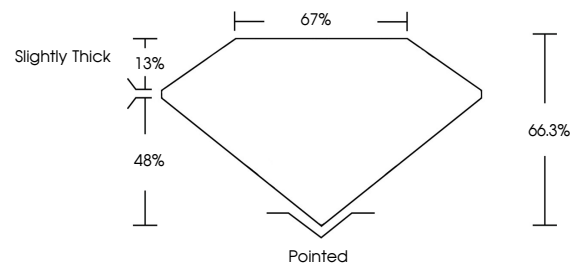
Carat Weight **1.30 CARAT**
Color Grade **FANCY VIVID BROWNISH PINK**
Clarity Grade **VVS 2**

ADDITIONAL GRADING INFORMATION

Polish **EXCELLENT**
Symmetry **EXCELLENT**
Fluorescence **SLIGHT**
Inscription(s) **IGI LG757506980**

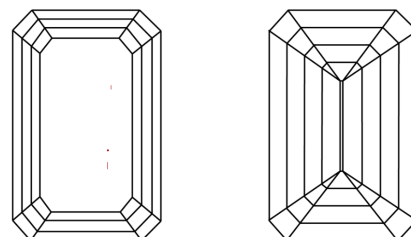
Comments: This Laboratory Grown Diamond was created by Chemical Vapor Deposition (CVD) growth process.
Indications of post-growth treatment.

PROPORTIONS



Sample Image Used

CLARITY CHARACTERISTICS



KEY TO SYMBOLS

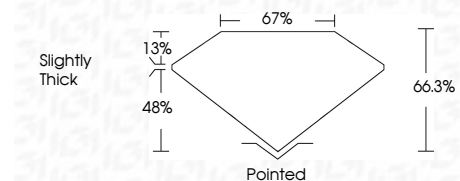
Red symbols indicate internal characteristics.
Green symbols indicate external characteristics.

COLOR

D E F G H I J Faint Very Light Light

CLARITY

FL	IF	VVS ¹⁻²	VS ¹⁻²	SI ¹⁻²	I ¹⁻³
Flawless	Internally Flawless	Very Very Slightly Included	Very Slightly Included	Slightly Included	Included



ADDITIONAL GRADING INFORMATION

Polish **EXCELLENT**
Symmetry **EXCELLENT**
Fluorescence **SLIGHT**
Inscription(s) **IGI LG757506980**
Comments: This Laboratory Grown Diamond was created by Chemical Vapor Deposition (CVD) growth process.
Indications of post-growth treatment.



December 20, 2025
IGI Report No **LG757506980**
EMERALD CUT
1.30 CARAT
Carat Weight
Color Grade **FANCY VIVID BROWNISH PINK**
Clarity Grade **VVS 2**
Depth **66.3%**
Table **67%**
Girdle **Slightly Thick**
Culet **Pointed**
Polish **EXCELLENT**
Symmetry **EXCELLENT**
Fluorescence **SLIGHT**
Inscription(s) **IGI LG757506980**
Comments: This Laboratory Grown Diamond was created by Chemical Vapor Deposition (CVD) growth process.
Indications of post-growth treatment.