



**ELECTRONIC COPY**

LG757506975  
Report verification at igi.org



December 18, 2025  
IGI Report Number **LG757506975**  
Description **LABORATORY GROWN DIAMOND**  
Shape and Cutting Style **CUT CORNERED  
RECTANGULAR MODIFIED  
BRILLIANT**  
Measurements **6.58 X 4.51 X 3.50 MM**  
**GRADING RESULTS**  
Carat Weight **1.03 CARAT**  
Color Grade **FANCY VIVID PINK**  
Clarity Grade **VS 1**

December 18, 2025  
IGI Report Number **LG757506975**  
Description **LABORATORY GROWN DIAMOND**  
Shape and Cutting Style **CUT CORNERED RECTANGULAR  
MODIFIED BRILLIANT**  
Measurements **6.58 X 4.51 X 3.50 MM**

**GRADING RESULTS**

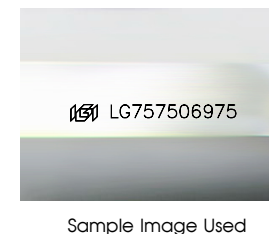
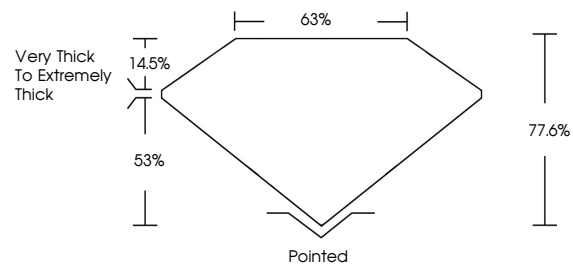
Carat Weight **1.03 CARAT**  
Color Grade **FANCY VIVID PINK**  
Clarity Grade **VS 1**

**ADDITIONAL GRADING INFORMATION**

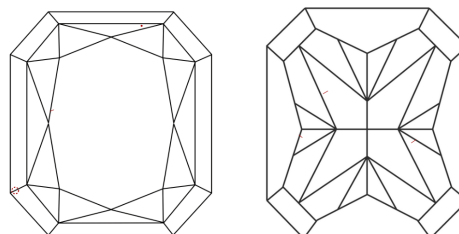
Polish **VERY GOOD**  
Symmetry **FAIR**  
Fluorescence **SLIGHT**  
Inscription(s) **IGI LG757506975**

Comments: This Laboratory Grown Diamond was created by Chemical Vapor Deposition (CVD) growth process. Indications of post-growth treatment.

**PROPORTIONS**



**CLARITY CHARACTERISTICS**



**KEY TO SYMBOLS**

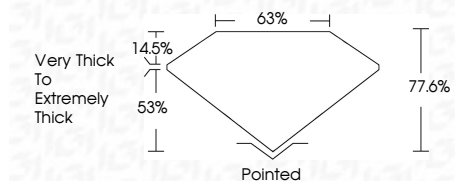
Red symbols indicate internal characteristics.  
Green symbols indicate external characteristics.

**COLOR**

D E F G H I J Faint Very Light Light

**CLARITY**

FL	IF	VS <sup>1-2</sup>	VS <sup>1-2</sup>	SI <sup>1-2</sup>	I <sup>1-3</sup>
Flawless	Internally Flawless	Very Very Slightly Included	Very Slightly Included	Slightly Included	Included



**ADDITIONAL GRADING INFORMATION**

Polish **VERY GOOD**  
Symmetry **FAIR**  
Fluorescence **SLIGHT**  
Inscription(s) **IGI LG757506975**  
Comments: This Laboratory Grown Diamond was created by Chemical Vapor Deposition (CVD) growth process. Indications of post-growth treatment.



December 18, 2025  
IGI Report No LG757506975  
CUT CORNERED RECT. MODIFIED BRILLIANT  
6.58 X 4.51 X 3.50 MM  
1.03 CARAT  
FANCY VIVID PINK  
VS 1  
77.6%  
53%  
Very Thick to Extremely Thick  
Pointed  
VERY GOOD  
FAIR  
SLIGHT  
IGI LG757506975  
Comments: This Laboratory Grown Diamond was created by Chemical Vapor Deposition (CVD) growth process. Indications of post-growth treatment.