



**ELECTRONIC COPY**

## LABORATORY GROWN DIAMOND REPORT

|                         |                          |
|-------------------------|--------------------------|
| December 15, 2025       |                          |
| IGI Report Number       | LG757505102              |
| Description             | LABORATORY GROWN DIAMOND |
| Shape and Cutting Style | ROUND BRILLIANT          |
| Measurements            | 8.58 - 8.66 X 5.48 MM    |

## GRADING RESULTS

|               |             |
|---------------|-------------|
| Carat Weight  | 2.53 CARATS |
| Color Grade   | E           |
| Clarity Grade | VVS 2       |
| Cut Grade     | EXCELLENT   |

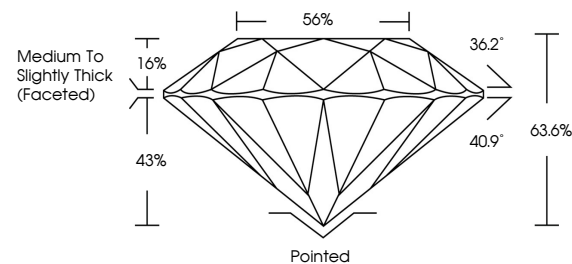
### ADDITIONAL GRADING INFORMATION

|                |   |
|----------------|---|
| Polish         | EXCELLENT   |
| Symmetry       | EXCELLENT   |
| Fluorescence   | NONE  |
| Inscription(s) |  LG757505102 |

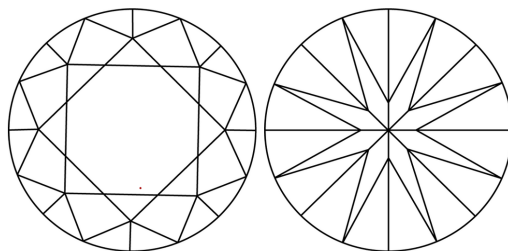
Comments: This Laboratory Grown Diamond was created by Chemical Vapor Deposition (CVD) growth process.  
Type IIa

LG757505102  
Report verification at [lgi.org](https://lgi.org)

## PROPORTIONS

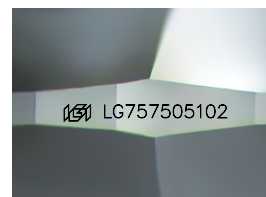


## CLARITY CHARACTERISTICS



### KEY TO SYMBOLS

Red symbols indicate internal characteristics.  
Green symbols indicate external characteristics.



Sample Image Used

## COLOR

D E F G H I J Faint Very Light Light

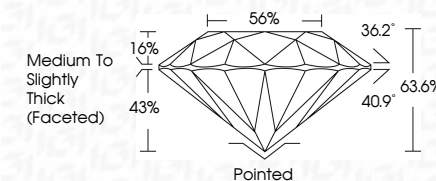
## CLARITY

| FL       | IF                  | VVS <sup>1-2</sup>          | VS <sup>1-2</sup>      | SI <sup>1-2</sup> | I <sup>1-3</sup> |
|----------|---------------------|-----------------------------|------------------------|-------------------|------------------|
| Flawless | Internally Flawless | Very Very Slightly Included | Very Slightly Included | Slightly Included | Included         |

## LABORATORY GROWN DIAMOND REPORT



|                         |                          |
|-------------------------|--------------------------|
| December 15, 2025       |                          |
| IGI Report Number       | LG757505102              |
| Description             | LABORATORY GROWN DIAMOND |
| Shape and Cutting Style | ROUND BRILLIANT          |
| Measurements            | 8.58 - 8.66 X 5.48 MM    |
| <b>GRADING RESULTS</b>  |                          |
| Carat Weight            | 2.53 CARATS              |
| Color Grade             | E                        |
| Clarity Grade           | VVS 2                    |
| Cut Grade               | EXCELLENT                |



### ADDITIONAL GRADING INFORMATION

|  |                           |
|--|---------------------------|
| Polish   | EXCELLENT                 |
| Symmetry   | EXCELLENT                 |
| Fluorescence   | NONE                      |
| Inscription(s)   | <del>LG</del> LG757505102 |
| Comments: This Laboratory Grown Diamond was created by Chemical Vapor Deposition (CVD) growth process. |                           |
| Type IIa   |                           |



IG



© IGI 2020, International Gemological Institute

FD - 10 20



THIS DOCUMENT WAS PRODUCED WITH THE FOLLOWING SECURITY MEASURES: SPECIAL DOCUMENT PAPER, INK SCREENS, WATERMARK, BACKGROUND DESIGNS, HOLOGRAM AND OTHER SECURITY FEATURES NOT LISTED AND DO EXCEED DOCUMENT SECURITY INDUSTRY GUIDELINES

**www.igi.org**

December 15, 2025  
IGI Report No LG757505102  
ROUND BRILLIANT

|                          |               |                                    |
|--------------------------|---------------|------------------------------------|
| 8.98" - 8.66" X 5.48" MM | Carat Weight  | 2.63 CARATS                        |
|                          | Color Grade   | E                                  |
|                          | Clarity Grade | VVS 2                              |
|                          | Cut Grade     | EXCELLENT                          |
|                          | Depth         | 63.06%                             |
|                          | Table         | 56%                                |
|                          | Girdle        | Medium to Slightly Thick (Faceted) |
|                          | Culet         | Pointed                            |
|                          | Polish        | EXCELLENT                          |
|                          | Symmetry      | EXCELLENT                          |
|                          | Fluorescence  | NONE                               |
|                          | Serial Number | USA127875051010                    |

**Comments:**  
This Laboratory Grown Diamond was created by Chemical Vapor Deposition (CVD) growth process.