

ELECTRONIC COPY

LABORATORY GROWN DIAMOND REPORT

December 29, 2025	
IGI Report Number	LG757504348
Description	LABORATORY GROWN DIAMOND
Shape and Cutting Style	ROUND BRILLIANT
Measurements	6.76 - 6.80 X 4.17 MM
GRADING RESULTS	
Carat Weight	1.19 CARAT
Color Grade	E
Clarity Grade	VS 1
Cut Grade	IDEAL

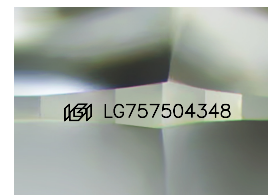
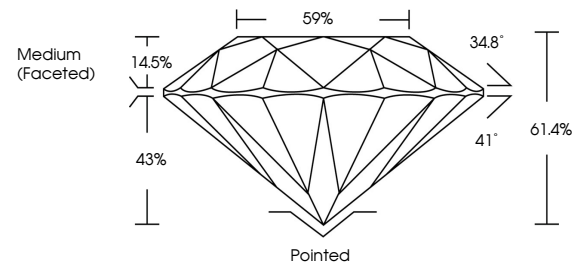
ADDITIONAL GRADING INFORMATION

Polish	EXCELLENT
Symmetry	EXCELLENT
Fluorescence	NONE
Inscription(s)	 LG757504348

Comments: As Grown - No indication of post-growth treatment.
This Laboratory Grown Diamond was created by High Pressure High Temperature (HPHT) growth process.
Type II

LG757504348
Report verification at igi.org

PROPORTIONS



Sample Image Used

COLOR

D E F G H I J Faint Very Light Light

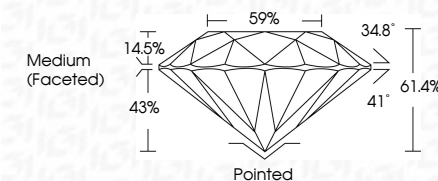
CLARITY

FL	IF	VVS ¹⁻²	VS ¹⁻²	SI ¹⁻²	I ¹⁻³
Flawless	Internally Flawless	Very Very Slightly Included	Very Slightly Included	Slightly Included	Included

LABORATORY GROWN DIAMOND REPORT



December 29, 2025	
IGI Report Number	LG757504348
Description	LABORATORY GROWN DIAMOND
Shape and Cutting Style	ROUND BRILLIANT
Measurements	6.76 - 6.80 X 4.17 MM
GRADING RESULTS	
Carat Weight	1.19 CARAT
Color Grade	E
Clarity Grade	VS 1
Cut Grade	IDEAL



ADDITIONAL GRADING INFORMATION

Polish	EXCELLENT
Symmetry	EXCELLENT
Fluorescence	NONE
Inscription(s)	(G) LG757504348
<p>Comments: As Grown - No indication of post-growth treatment.</p> <p>This Laboratory Grown Diamond was created by High Pressure High Temperature (HPHT) growth process.</p> <p>Type II</p>	

