



ELECTRONIC COPY

LG757503319
Report verification at igi.org



December 18, 2025
IGI Report Number **LG757503319**
Description **LABORATORY GROWN DIAMOND**
Shape and Cutting Style **CUSHION MODIFIED BRILLIANT**
Measurements **6.33 X 5.96 X 4.27 MM**
GRADING RESULTS
Carat Weight **1.34 CARAT**
Color Grade **FANCY VIVID PINK**
Clarity Grade **SI 1**

LABORATORY GROWN DIAMOND REPORT

December 18, 2025
IGI Report Number **LG757503319**
Description **LABORATORY GROWN DIAMOND**
Shape and Cutting Style **CUSHION MODIFIED BRILLIANT**
Measurements **6.33 X 5.96 X 4.27 MM**

GRADING RESULTS

Carat Weight **1.34 CARAT**
Color Grade **FANCY VIVID PINK**
Clarity Grade **SI 1**

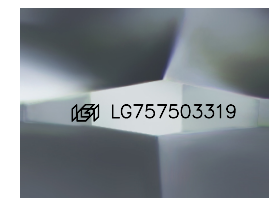
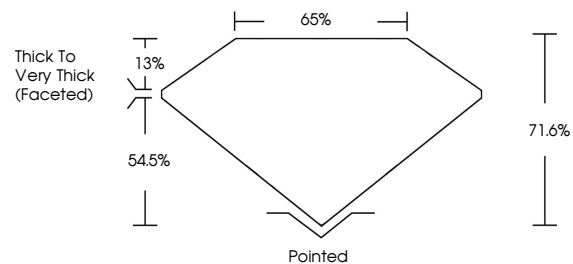
ADDITIONAL GRADING INFORMATION

Polish **VERY GOOD**
Symmetry **VERY GOOD**
Fluorescence **SLIGHT**
Inscription(s) **LG757503319**

Comments: This Laboratory Grown Diamond was created by Chemical Vapor Deposition (CVD) growth process.
Indications of post-growth treatment.

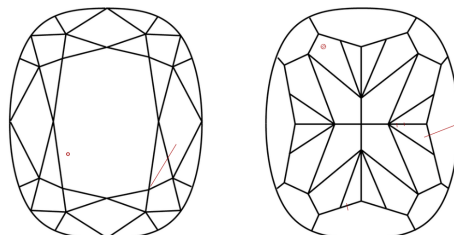
Secondary color: Brown

PROPORTIONS



Sample Image Used

CLARITY CHARACTERISTICS



KEY TO SYMBOLS

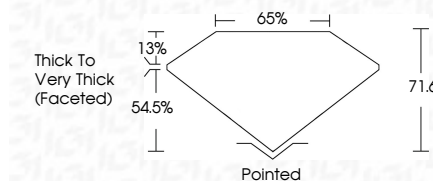
Red symbols indicate internal characteristics.
Green symbols indicate external characteristics.

COLOR

D E F G H I J Faint Very Light Light

CLARITY

FL	IF	VS ¹⁻²	VS ¹⁻²	SI ¹⁻²	I ¹⁻³
Flawless	Internally Flawless	Very Very Slightly Included	Very Slightly Included	Slightly Included	Included



ADDITIONAL GRADING INFORMATION

Polish **VERY GOOD**
Symmetry **VERY GOOD**
Fluorescence **SLIGHT**
Inscription(s) **LG757503319**
Comments: This Laboratory Grown Diamond was created by Chemical Vapor Deposition (CVD) growth process.
Indications of post-growth treatment.
Secondary color: Brown



December 18, 2025
IGI Report No **LG757503319**
CUSHION MODIFIED BRILLIANT
6.33 X 5.96 X 4.27 MM
1.34 CARAT
FANCY VIVID PINK
SI 1
71.6%
65%
Thick to Very Thick (Faceted)
Pointed
VERY GOOD
VERY GOOD
SLIGHT
 LG757503319
Comments: This Laboratory Grown Diamond was created by Chemical Vapor Deposition (CVD) growth process.
Indications of post-growth treatment.
Secondary color: Brown