



ELECTRONIC COPY

LG757503256
Report verification at igi.org



December 18, 2025
IGI Report Number **LG757503256**
Description **LABORATORY GROWN DIAMOND**
Shape and Cutting Style **EMERALD CUT**
Measurements **7.07 X 4.89 X 3.15 MM**
GRADING RESULTS
Carat Weight **1.16 CARAT**
Color Grade **FANCY PINK BROWN**
Clarity Grade **VS 2**

LABORATORY GROWN DIAMOND REPORT

December 18, 2025
IGI Report Number **LG757503256**
Description **LABORATORY GROWN DIAMOND**
Shape and Cutting Style **EMERALD CUT**
Measurements **7.07 X 4.89 X 3.15 MM**

GRADING RESULTS

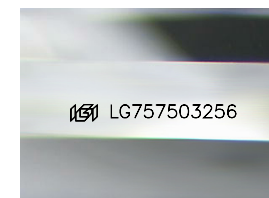
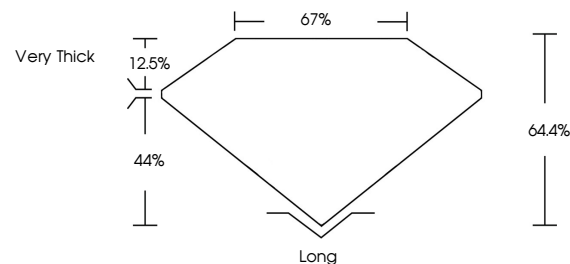
Carat Weight **1.16 CARAT**
Color Grade **FANCY PINK BROWN**
Clarity Grade **VS 2**

ADDITIONAL GRADING INFORMATION

Polish **VERY GOOD**
Symmetry **VERY GOOD**
Fluorescence **SLIGHT**
Inscription(s) **LG757503256**

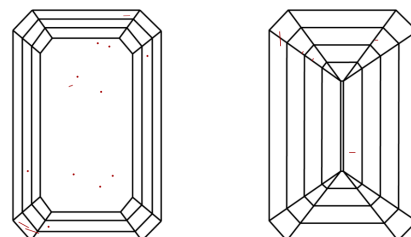
Comments: This Laboratory Grown Diamond was created by Chemical Vapor Deposition (CVD) growth process.
Indications of post-growth treatment.

PROPORTIONS



Sample Image Used

CLARITY CHARACTERISTICS



KEY TO SYMBOLS

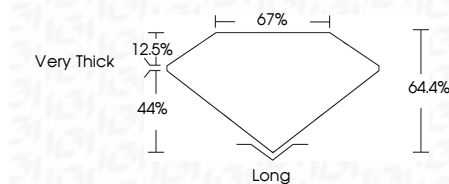
Red symbols indicate internal characteristics.
Green symbols indicate external characteristics.

COLOR

D E F G H I J Faint Very Light Light

CLARITY

FL	IF	VS ¹⁻²	VS ¹⁻²	SI ¹⁻²	I ¹⁻³
Flawless	Internally Flawless	Very Very Slightly Included	Very Slightly Included	Slightly Included	Included



ADDITIONAL GRADING INFORMATION

Polish **VERY GOOD**
Symmetry **VERY GOOD**
Fluorescence **SLIGHT**
Inscription(s) **LG757503256**
Comments: This Laboratory Grown Diamond was created by Chemical Vapor Deposition (CVD) growth process.
Indications of post-growth treatment.



IGI



December 18, 2025
IGI Report No. **LG757503256**
EMERALD CUT
7.07 X 4.89 X 3.15 MM
Carat Weight **1.16 CARAT**
Color Grade **FANCY PINK BROWN**
Clarity Grade **VS 2**
Depth **64.4%**
Table **67%**
Girdle **Very Thick**
Culet **Long**
Polish **VERY GOOD**
Symmetry **VERY GOOD**
Fluorescence **SLIGHT**
Inscription(s) **LG757503256**
Comments: This Laboratory Grown Diamond was created by Chemical Vapor Deposition (CVD) growth process.
Indications of post-growth treatment.