



ELECTRONIC COPY

LABORATORY GROWN DIAMOND REPORT

| | |
|-------------------------|--------------------------|
| December 18, 2025 | |
| IGI Report Number | LG757503254 |
| Description | LABORATORY GROWN DIAMOND |
| Shape and Cutting Style | ROUND BRILLIANT |
| Measurements | 6.89 - 6.93 X 4.03 MM |

GRADING RESULTS

| | |
|---------------|-------------------|
| Carat Weight | 1.15 CARAT |
| Color Grade | FANCY DEEP ORANGE |
| Clarity Grade | VS 2 |
| Cut Grade | EXCELLENT |

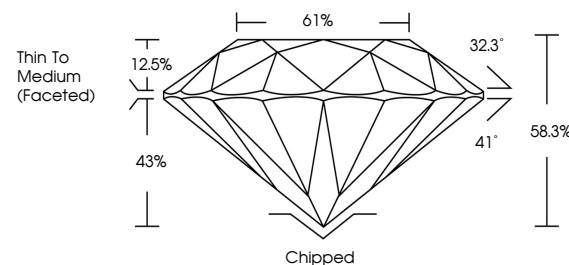
ADDITIONAL GRADING INFORMATION

| | |
|----------------|---|
| Polish | VERY GOOD |
| Symmetry | VERY GOOD |
| Fluorescence | NONE |
| Inscription(s) |  LG757503254 |

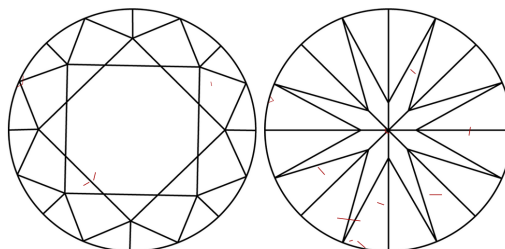
Comments: This Laboratory Grown Diamond was created by Chemical Vapor Deposition (CVD) growth process.
Indications of post-growth treatment.

LG757503254
Report verification at lgi.org

PROPORTIONS

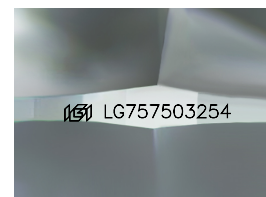


CLARITY CHARACTERISTICS



KEY TO SYMBOLS

Red symbols indicate internal characteristics.
Green symbols indicate external characteristics.



Sample Image Used

COLOR

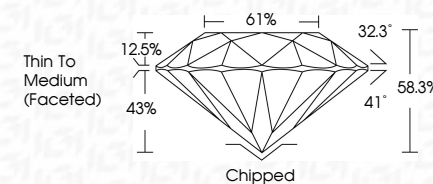
D E F G H I J Faint Very Light Light

CLARITY

| FL | IF | VVS ¹⁻² | VS ¹⁻² | SI ¹⁻² | I ¹⁻³ |
|----------|---------------------|-----------------------------|------------------------|-------------------|------------------|
| Flawless | Internally Flawless | Very Very Slightly Included | Very Slightly Included | Slightly Included | Included |



| | |
|-------------------------|--------------------------|
| December 18, 2025 | |
| IGI Report Number | LG757503254 |
| Description | LABORATORY GROWN DIAMOND |
| Shape and Cutting Style | ROUND BRILLIANT |
| Measurements | 6.89 - 6.93 X 4.03 MM |
| GRADING RESULTS | |
| Carat Weight | 1.15 CARAT |
| Color Grade | FANCY DEEP ORANGE |
| Clarity Grade | VS 2 |
| Cut Grade | EXCELLENT |



ADDITIONAL GRADING INFORMATION

| | |
|--|---|
| Polish | VERY GOOD |
| Symmetry | VERY GOOD |
| Fluorescence | NONE |
| Inscription(s) |  |
| <p>Comments: This Laboratory Grown Diamond was created by Chemical Vapor Deposition (CVD) growth process.</p> <p>Indications of post-growth treatment.</p> | |



© IGI 2020, International Gemological Institute

FD - 10 20

www.igi.org

THIS DOCUMENT WAS PRODUCED WITH THE FOLLOWING SECURITY MEASURES: SPECIAL DOCUMENT PAPER, INK SCREENS, WATERMARK BACKGROUND DESIGNS, HOLOGRAM AND OTHER SECURITY FEATURES NOT LISTED AND DO EXCEED DOCUMENT SECURITY INDUSTRY GUIDELINES

December 18, 2025
 IGI Report No LG757503254
 ROUND BRILLIANT

| | | | |
|-----------------------|--|-------------------------|--|
| 6.99 - 6.93 X 4.03 MM | | 1.15 CARAT | |
| FANCY DEEP ORANGE | | VS 2 | |
| Carat Weight | | EXCELLENT | |
| Color Grade | | 58.3% | |
| Clarity Grade | | 61% | |
| Cut Grade | | Thin To Medium (face=0) | |
| Depth | | Chipped | |
| Table | | VERY GOOD | |
| Girdle | | VERY GOOD | |
| Culet | | NONE | |
| Polish | | | |
| Symmetry | | | |
| Fluorescence | | | |

Comments:
This Laboratory Grown Diamond was
created by Chemical Vapor Deposition
(CVD) growth process.