



ELECTRONIC COPY

LG757503201
Report verification at igi.org



December 22, 2025
IGI Report Number **LG757503201**
Description **LABORATORY GROWN DIAMOND**
Shape and Cutting Style **ROUND BRILLIANT**
Measurements **6.58 - 6.60 X 3.93 MM**
GRADING RESULTS
Carat Weight **1.04 CARAT**
Color Grade **FANCY VIVID PINK**
Clarity Grade **VS 1**
Cut Grade **IDEAL**

December 22, 2025
IGI Report Number **LG757503201**
Description **LABORATORY GROWN DIAMOND**
Shape and Cutting Style **ROUND BRILLIANT**
Measurements **6.58 - 6.60 X 3.93 MM**

GRADING RESULTS

Carat Weight **1.04 CARAT**
Color Grade **FANCY VIVID PINK**
Clarity Grade **VS 1**
Cut Grade **IDEAL**

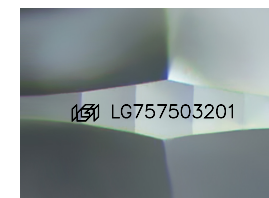
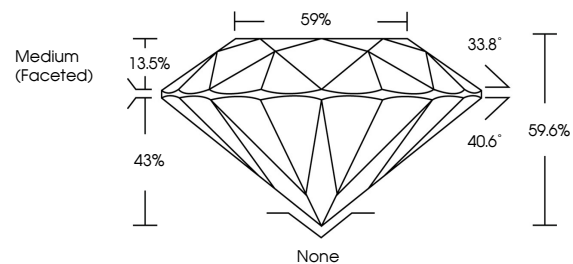
ADDITIONAL GRADING INFORMATION

Polish **EXCELLENT**
Symmetry **EXCELLENT**
Fluorescence **SLIGHT**
Inscription(s) **IGI LG757503201**

Comments: This Laboratory Grown Diamond was created by Chemical Vapor Deposition (CVD) growth process.
Indications of post-growth treatment.

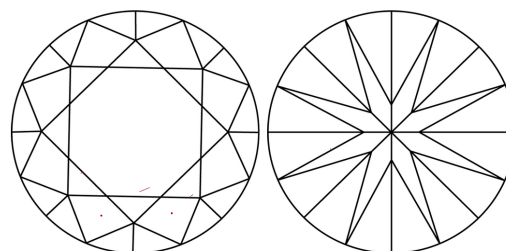
Secondary color: Orange

PROPORTIONS



Sample Image Used

CLARITY CHARACTERISTICS



KEY TO SYMBOLS

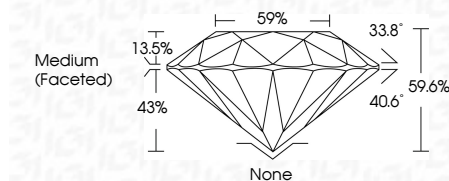
Red symbols indicate internal characteristics.
Green symbols indicate external characteristics.

COLOR

D E F G H I J Faint Very Light Light

CLARITY

FL	IF	VS ¹⁻²	VS ¹⁻²	SI ¹⁻²	I ¹⁻³
Flawless	Internally Flawless	Very Very Slightly Included	Very Slightly Included	Slightly Included	Included



ADDITIONAL GRADING INFORMATION

Polish **EXCELLENT**
Symmetry **EXCELLENT**
Fluorescence **SLIGHT**
Inscription(s) **IGI LG757503201**
Comments: This Laboratory Grown Diamond was created by Chemical Vapor Deposition (CVD) growth process.
Indications of post-growth treatment.
Secondary color: Orange



December 22, 2025
IGI Report No **LG757503201**
ROUND BRILLIANT
6.58 - 6.60 X 3.93 MM
Carat Weight **1.04 CARAT**
Color Grade **FANCY VIVID PINK**
Clarity Grade **VS 1**
Depth **IDEAL**
Table **59.6%**
Girdle **Medium (Faceted)**
Culet **None**
Polish **EXCELLENT**
Symmetry **EXCELLENT**
Fluorescence **SLIGHT**
Inscription(s) **IGI LG757503201**
Comments: This Laboratory Grown Diamond was created by Chemical Vapor Deposition (CVD) growth process.
Indications of post-growth treatment.
Secondary color: Orange