



ELECTRONIC COPY

LABORATORY GROWN DIAMOND REPORT

December 22, 2025
IGI Report Number LG757503194
Description LABORATORY GROWN DIAMOND
Shape and Cutting Style CUT CORNERED RECTANGULAR MODIFIED BRILLIANT
Measurements 6.20 X 4.74 X 3.56 MM

GRADING RESULTS

Carat Weight 1.01 CARAT
Color Grade FANCY VIVID PINK
Clarity Grade SI 2

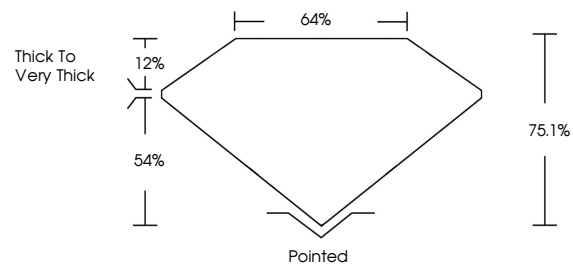
ADDITIONAL GRADING INFORMATION

Polish EXCELLENT
Symmetry EXCELLENT
Fluorescence SLIGHT
Inscription(s) LG757503194

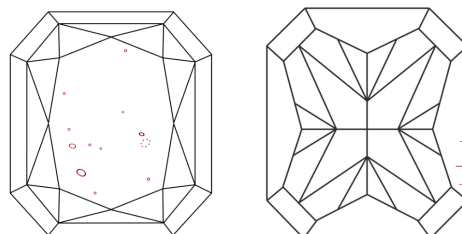
Comments: This Laboratory Grown Diamond was created by Chemical Vapor Deposition (CVD) growth process.
Indications of post-growth treatment.

Secondary color: Brown

PROPORTIONS

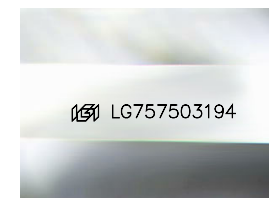


CLARITY CHARACTERISTICS



KEY TO SYMBOLS

Red symbols indicate internal characteristics.
Green symbols indicate external characteristics.



Sample Image Used

COLOR

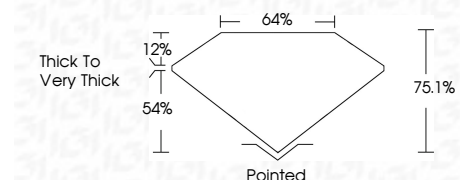
D E F G H I J Faint Very Light Light

CLARITY

FL IF VS¹⁻² VS¹⁻² SI¹⁻² I¹⁻³
Flawless Internally Flawless Very Very Slightly Included Very Slightly Included Slightly Included Included



December 22, 2025
IGI Report Number LG757503194
Description LABORATORY GROWN DIAMOND
Shape and Cutting Style CUT CORNERED RECTANGULAR MODIFIED BRILLIANT
Measurements 6.20 X 4.74 X 3.56 MM
GRADING RESULTS
Carat Weight 1.01 CARAT
Color Grade FANCY VIVID PINK
Clarity Grade SI 2



ADDITIONAL GRADING INFORMATION

Polish EXCELLENT
Symmetry EXCELLENT
Fluorescence SLIGHT
Inscription(s) LG757503194
Comments: This Laboratory Grown Diamond was created by Chemical Vapor Deposition (CVD) growth process.
Indications of post-growth treatment.
Secondary color: Brown



December 22, 2025
IGI Report No LG757503194
CUT CORNERED RECT. MODIFIED BRILLIANT
6.20 X 4.74 X 3.56 MM
1.01 CARAT
FANCY VIVID PINK
SI 2
75.1%
64%
Thick to Very Thick
Pointed
EXCELLENT
EXCELLENT
SLIGHT
Inscription(s) LG757503194

Comments: This Laboratory Grown Diamond was created by Chemical Vapor Deposition (CVD) growth process.
Indications of post-growth treatment.
Secondary color: Brown