



ELECTRONIC COPY

LG757503158
Report verification at igi.org



December 22, 2025

IGI Report Number **LG757503158**

Description **LABORATORY GROWN DIAMOND**

Shape and Cutting Style **CUT CORNERED
RECTANGULAR MODIFIED
BRILLIANT**

Measurements **7.92 X 5.71 X 3.92 MM**

GRADING RESULTS

Carat Weight **1.71 CARAT**

Color Grade **FANCY INTENSE YELLOW**

Clarity Grade **VS 1**

December 22, 2025

IGI Report Number **LG757503158**

Description **LABORATORY GROWN DIAMOND**

Shape and Cutting Style **CUT CORNERED RECTANGULAR
MODIFIED BRILLIANT**

Measurements **7.92 X 5.71 X 3.92 MM**

GRADING RESULTS

Carat Weight **1.71 CARAT**

Color Grade **FANCY INTENSE YELLOW**

Clarity Grade **VS 1**

ADDITIONAL GRADING INFORMATION

Polish **EXCELLENT**

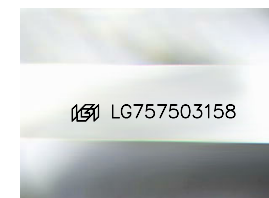
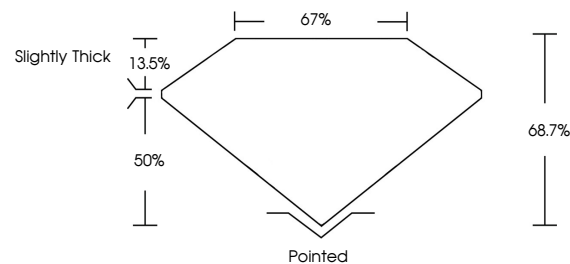
Symmetry **EXCELLENT**

Fluorescence **NONE**

Inscription(s) **IGI LG757503158**

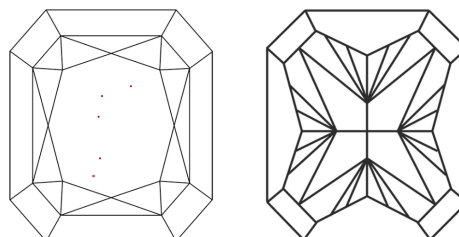
Comments: This Laboratory Grown Diamond was created by Chemical Vapor Deposition (CVD) growth process.

PROPORTIONS



Sample Image Used

CLARITY CHARACTERISTICS



KEY TO SYMBOLS

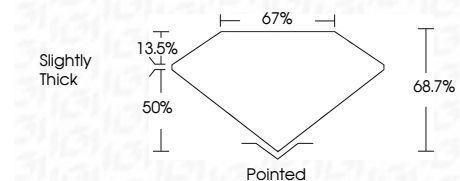
Red symbols indicate internal characteristics.
Green symbols indicate external characteristics.

COLOR

D E F G H I J Faint Very Light Light

CLARITY

FL	IF	VS ¹⁻²	VS ¹⁻²	SI ¹⁻²	I ¹⁻³
Flawless	Internally Flawless	Very Very Slightly Included	Very Slightly Included	Slightly Included	Included



ADDITIONAL GRADING INFORMATION

Polish **EXCELLENT**

Symmetry **EXCELLENT**

Fluorescence **NONE**

Inscription(s) **IGI LG757503158**

Comments: This Laboratory Grown Diamond was created by Chemical Vapor Deposition (CVD) growth process.



IGI



December 22, 2025
IGI Report No LG757503158
CUT CORNERED RECT. MODIFIED BRILLIANT

7.92 X 5.71 X 3.92 MM
1.71 CARAT
FANCY INTENSE YELLOW
VS 1
68.7%
67%
Slightly Thick

Pointed
EXCELLENT
EXCELLENT
NONE
IGI LG757503158

Comments: This Laboratory Grown Diamond was created by Chemical Vapor Deposition (CVD) growth process.