



ELECTRONIC COPY

LG757503150
Report verification at igi.org



December 17, 2025
IGI Report Number **LG757503150**
Description **LABORATORY GROWN DIAMOND**
Shape and Cutting Style **CUT CORNERED
RECTANGULAR MODIFIED
BRILLIANT**
Measurements **8.39 X 6.00 X 4.03 MM**
GRADING RESULTS
Carat Weight **1.81 CARAT**
Color Grade **FANCY VIVID PINK**
Clarity Grade **VS 2**

December 17, 2025
IGI Report Number **LG757503150**
Description **LABORATORY GROWN DIAMOND**
Shape and Cutting Style **CUT CORNERED RECTANGULAR
MODIFIED BRILLIANT**
Measurements **8.39 X 6.00 X 4.03 MM**

GRADING RESULTS

Carat Weight **1.81 CARAT**
Color Grade **FANCY VIVID PINK**
Clarity Grade **VS 2**

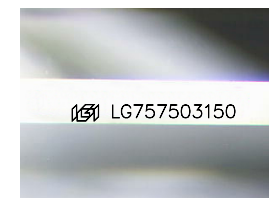
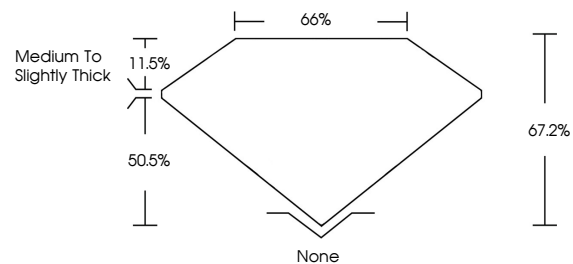
ADDITIONAL GRADING INFORMATION

Polish **EXCELLENT**
Symmetry **EXCELLENT**
Fluorescence **SLIGHT**
Inscription(s) **IGI LG757503150**

Comments: This Laboratory Grown Diamond was created by Chemical Vapor Deposition (CVD) growth process.
Indications of post-growth treatment.

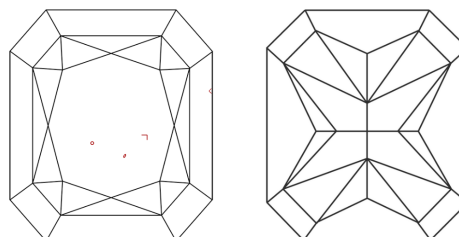
Secondary color: Brown

PROPORTIONS



Sample Image Used

CLARITY CHARACTERISTICS



KEY TO SYMBOLS

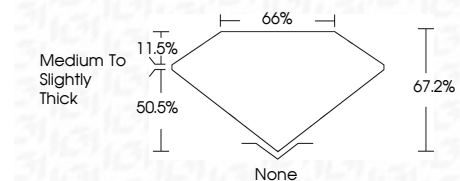
Red symbols indicate internal characteristics.
Green symbols indicate external characteristics.

COLOR

D E F G H I J Faint Very Light Light

CLARITY

FL	IF	VS ¹⁻²	VS ¹⁻²	SI ¹⁻²	I ¹⁻³
Flawless	Internally Flawless	Very Very Slightly Included	Very Slightly Included	Slightly Included	Included



ADDITIONAL GRADING INFORMATION

Polish **EXCELLENT**
Symmetry **EXCELLENT**
Fluorescence **SLIGHT**
Inscription(s) **IGI LG757503150**
Comments: This Laboratory Grown Diamond was created by Chemical Vapor Deposition (CVD) growth process.
Indications of post-growth treatment.
Secondary color: Brown



December 17, 2025
IGI Report No LG757503150
CUT CORNERED RECT. MODIFIED BRILLIANT
8.39 X 6.00 X 4.03 MM
1.81 CARAT
FANCY VIVID PINK
VS 2
67.2%
50.5%
Medium to Slightly Thick
None
EXCELLENT
EXCELLENT
SLIGHT
IGI LG757503150
Comments: This Laboratory Grown Diamond was created by Chemical Vapor Deposition (CVD) growth process.
Indications of post-growth treatment.
Secondary color: Brown