



**ELECTRONIC COPY**

LG757503130  
Report verification at igi.org



December 20, 2025  
IGI Report Number **LG757503130**  
Description **LABORATORY GROWN DIAMOND**  
Shape and Cutting Style **EMERALD CUT**  
Measurements **7.45 X 5.52 X 3.77 MM**  
**GRADING RESULTS**  
Carat Weight **1.62 CARAT**  
Color Grade **FANCY VIVID BROWNISH PINK**  
Clarity Grade **VS 2**

December 20, 2025  
IGI Report Number **LG757503130**  
Description **LABORATORY GROWN DIAMOND**  
Shape and Cutting Style **EMERALD CUT**  
Measurements **7.45 X 5.52 X 3.77 MM**

**GRADING RESULTS**

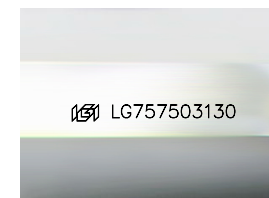
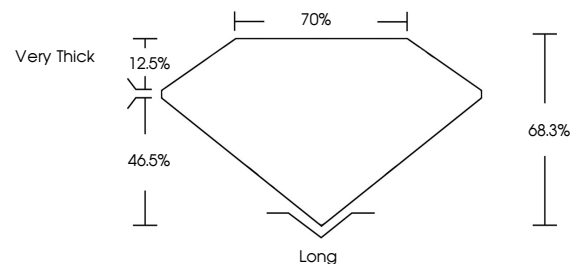
Carat Weight **1.62 CARAT**  
Color Grade **FANCY VIVID BROWNISH PINK**  
Clarity Grade **VS 2**

**ADDITIONAL GRADING INFORMATION**

Polish **VERY GOOD**  
Symmetry **VERY GOOD**  
Fluorescence **SLIGHT**  
Inscription(s) **LG757503130**

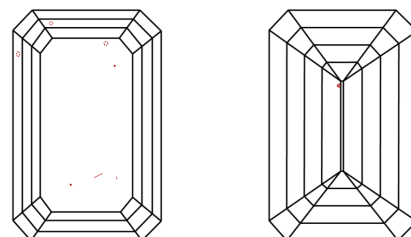
Comments: This Laboratory Grown Diamond was created by Chemical Vapor Deposition (CVD) growth process.  
Indications of post-growth treatment.

**PROPORTIONS**



Sample Image Used

**CLARITY CHARACTERISTICS**



**KEY TO SYMBOLS**

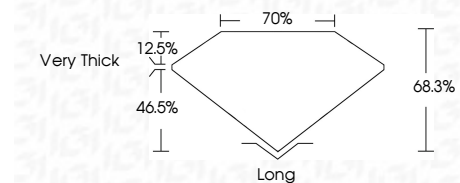
Red symbols indicate internal characteristics.  
Green symbols indicate external characteristics.

**COLOR**

D E F G H I J Faint Very Light Light

**CLARITY**

FL	IF	VS <sup>1-2</sup>	VS <sup>1-2</sup>	SI <sup>1-2</sup>	I <sup>1-3</sup>
Flawless	Internally Flawless	Very Very Slightly Included	Very Slightly Included	Slightly Included	Included



**ADDITIONAL GRADING INFORMATION**

Polish **VERY GOOD**  
Symmetry **VERY GOOD**  
Fluorescence **SLIGHT**  
Inscription(s) **LG757503130**  
Comments: This Laboratory Grown Diamond was created by Chemical Vapor Deposition (CVD) growth process.  
Indications of post-growth treatment.



December 20, 2025  
IGI Report No **LG757503130**  
**EMERALD CUT**  
**1.62 CARAT**  
**FANCY VIVID BROWNISH PINK**  
Color Grade  
**VS 2**  
Clarity Grade  
**68.3%**  
Table  
**70%**  
Girdle  
**Very Thick**  
Culet  
**Long**  
Polish  
**VERY GOOD**  
Symmetry  
**VERY GOOD**  
Fluorescence  
**SLIGHT**  
Inscription(s)  
 **LG757503130**  
Comments: This Laboratory Grown Diamond was created by Chemical Vapor Deposition (CVD) growth process.  
Indications of post-growth treatment.