



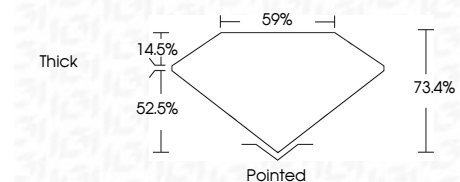
ELECTRONIC COPY

LG757503096
Report verification at igi.org



December 18, 2025
IGI Report Number **LG757503096**
Description **LABORATORY GROWN DIAMOND**
Shape and Cutting Style **RECTANGULAR PRINCESS**
Measurements **6.65 X 6.16 X 4.52 MM**

GRADING RESULTS
Carat Weight **1.67 CARAT**
Color Grade **FANCY VIVID ORANGY PINK**
Clarity Grade **VVS 2**



ADDITIONAL GRADING INFORMATION
Polish **EXCELLENT**
Symmetry **VERY GOOD**
Fluorescence **SLIGHT**
Inscription(s) **IGI LG757503096**
Comments: This Laboratory Grown Diamond was created by Chemical Vapor Deposition (CVD) growth process. Indications of post-growth treatment.



December 18, 2025
IGI Report No LG757503096
RECTANGULAR PRINCESS
6.65 X 6.16 X 4.52 MM
1.67 CARAT
FANCY VIVID ORANGY PINK
VVS 2
73.4%
59%
Thick
Pointed
EXCELLENT
VERY GOOD
SLIGHT
IGI LG757503096
Comments: This Laboratory Grown Diamond was created by Chemical Vapor Deposition (CVD) growth process. Indications of post-growth treatment.

LABORATORY GROWN DIAMOND REPORT

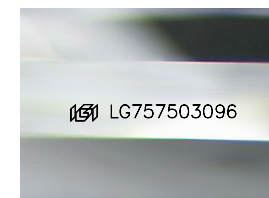
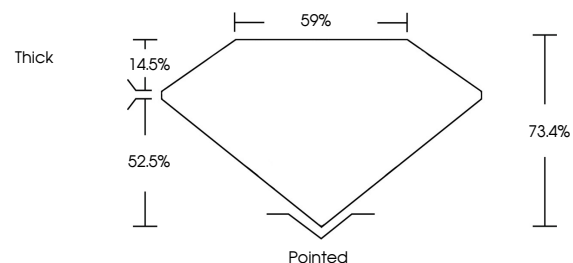
December 18, 2025
IGI Report Number **LG757503096**
Description **LABORATORY GROWN DIAMOND**
Shape and Cutting Style **RECTANGULAR PRINCESS**
Measurements **6.65 X 6.16 X 4.52 MM**

GRADING RESULTS
Carat Weight **1.67 CARAT**
Color Grade **FANCY VIVID ORANGY PINK**
Clarity Grade **VVS 2**

ADDITIONAL GRADING INFORMATION
Polish **EXCELLENT**
Symmetry **VERY GOOD**
Fluorescence **SLIGHT**
Inscription(s) **IGI LG757503096**

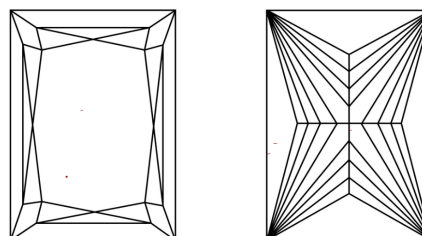
Comments: This Laboratory Grown Diamond was created by Chemical Vapor Deposition (CVD) growth process. Indications of post-growth treatment.

PROPORTIONS



Sample Image Used

CLARITY CHARACTERISTICS



KEY TO SYMBOLS

Red symbols indicate internal characteristics.
Green symbols indicate external characteristics.

COLOR

D E F G H I J Faint Very Light Light

CLARITY

FL	IF	VVS ¹⁻²	VS ¹⁻²	SI ¹⁻²	I ¹⁻³
Flawless	Internally Flawless	Very Very Slightly Included	Very Slightly Included	Slightly Included	Included

