



ELECTRONIC COPY

LG757503092
Report verification at igi.org



December 22, 2025

IGI Report Number **LG757503092**

Description **LABORATORY GROWN DIAMOND**

Shape and Cutting Style **CUT CORNERED
RECTANGULAR MODIFIED
BRILLIANT**

Measurements **7.58 X 6.04 X 4.06 MM**

GRADING RESULTS

Carat Weight **1.73 CARAT**

Color Grade **FANCY DEEP BLUE**

Clarity Grade **SI 1**

December 22, 2025

IGI Report Number **LG757503092**

Description **LABORATORY GROWN DIAMOND**

Shape and Cutting Style **CUT CORNERED RECTANGULAR
MODIFIED BRILLIANT**

Measurements **7.58 X 6.04 X 4.06 MM**

GRADING RESULTS

Carat Weight **1.73 CARAT**

Color Grade **FANCY DEEP BLUE**

Clarity Grade **SI 1**

ADDITIONAL GRADING INFORMATION

Polish **VERY GOOD**

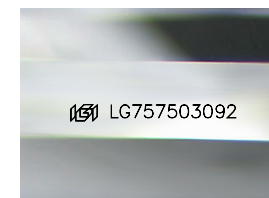
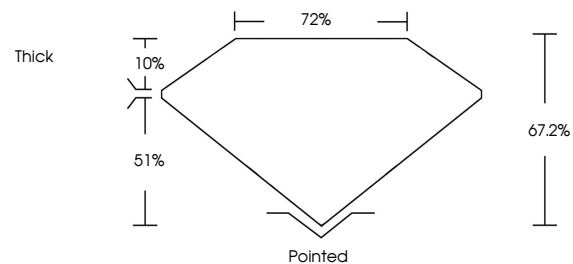
Symmetry **VERY GOOD**

Fluorescence **NONE**

Inscription(s) **IGI LG757503092**

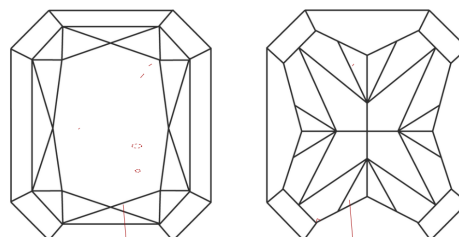
Comments: This Laboratory Grown Diamond was created by Chemical Vapor Deposition (CVD) growth process. Indications of post-growth treatment.

PROPORTIONS



Sample Image Used

CLARITY CHARACTERISTICS



KEY TO SYMBOLS

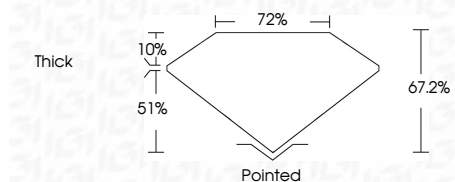
Red symbols indicate internal characteristics.
Green symbols indicate external characteristics.

COLOR

D E F G H I J Faint Very Light Light

CLARITY

FL	IF	VS ¹⁻²	VS ¹⁻²	SI ¹⁻²	I ¹⁻³
Flawless	Internally Flawless	Very Very Slightly Included	Very Slightly Included	Slightly Included	Included



ADDITIONAL GRADING INFORMATION

Polish **VERY GOOD**

Symmetry **VERY GOOD**

Fluorescence **NONE**

Inscription(s) **IGI LG757503092**

Comments: This Laboratory Grown Diamond was created by Chemical Vapor Deposition (CVD) growth process. Indications of post-growth treatment.



December 22, 2025
IGI Report No LG757503092
CUT CORNERED RECT. MODIFIED BRILLIANT

7.58 X 6.04 X 4.06 MM

1.73 CARAT
FANCY DEEP BLUE

SI 1
67.2%
72%
Thick

Pointed
VERY GOOD
VERY GOOD
NONE
NONE

IGI LG757503092

Comments: This Laboratory Grown Diamond was created by Chemical Vapor Deposition (CVD) growth process. Indications of post-growth treatment.