



**ELECTRONIC COPY**

LG757503054  
Report verification at igi.org



December 20, 2025

IGI Report Number **LG757503054**

Description **LABORATORY GROWN DIAMOND**

Shape and Cutting Style **PEAR MODIFIED BRILLIANT**

Measurements **8.48 X 5.34 X 3.35 MM**

**GRADING RESULTS**

Carat Weight **1.09 CARAT**

Color Grade **FANCY YELLOW**

Clarity Grade **VS 1**

December 20, 2025  
IGI Report Number **LG757503054**  
Description **LABORATORY GROWN DIAMOND**  
Shape and Cutting Style **PEAR MODIFIED BRILLIANT**  
Measurements **8.48 X 5.34 X 3.35 MM**

**GRADING RESULTS**

Carat Weight **1.09 CARAT**

Color Grade **FANCY YELLOW**

Clarity Grade **VS 1**

**ADDITIONAL GRADING INFORMATION**

Polish **EXCELLENT**

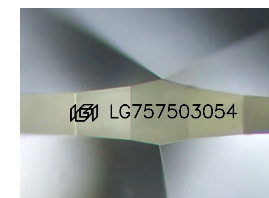
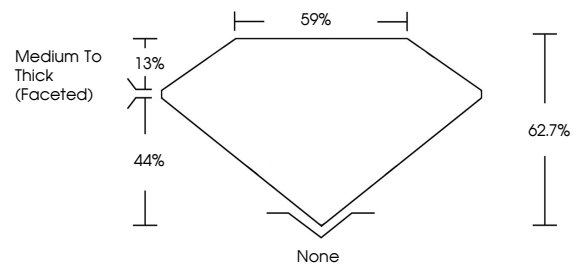
Symmetry **EXCELLENT**

Fluorescence **NONE**

Inscription(s) **IGI LG757503054**

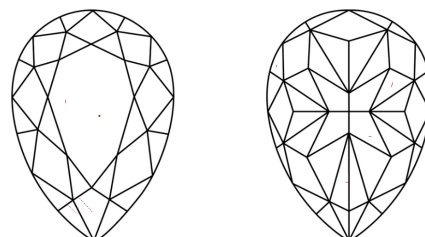
Comments: This Laboratory Grown Diamond was created by Chemical Vapor Deposition (CVD) growth process.

**PROPORTIONS**



Sample Image Used

**CLARITY CHARACTERISTICS**



**KEY TO SYMBOLS**

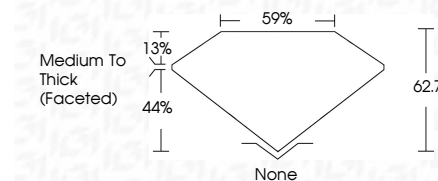
Red symbols indicate internal characteristics.  
Green symbols indicate external characteristics.

**COLOR**

D E F G H I J Faint Very Light Light

**CLARITY**

FL	IF	VS <sup>1-2</sup>	VS <sup>1-2</sup>	SI <sup>1-2</sup>	I <sup>1-3</sup>
Flawless	Internally Flawless	Very Very Slightly Included	Very Slightly Included	Slightly Included	Included



**ADDITIONAL GRADING INFORMATION**

Polish **EXCELLENT**

Symmetry **EXCELLENT**

Fluorescence **NONE**

Inscription(s) **IGI LG757503054**

Comments: This Laboratory Grown Diamond was created by Chemical Vapor Deposition (CVD) growth process.



December 20, 2025  
IGI Report No LG757503054  
**PEAR MODIFIED BRILLIANT**  
8.48 X 5.34 X 3.35 MM  
1.09 CARAT  
FANCY YELLOW  
VS 1  
62.7%  
59%  
Medium To Thick (Faceted)  
None  
EXCELLENT  
EXCELLENT  
NONE  
IGI LG757503054

Comments: This Laboratory Grown Diamond was created by Chemical Vapor Deposition (CVD) growth process.