



**ELECTRONIC COPY**

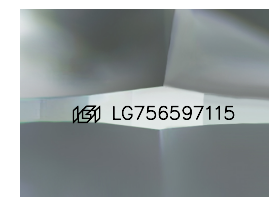
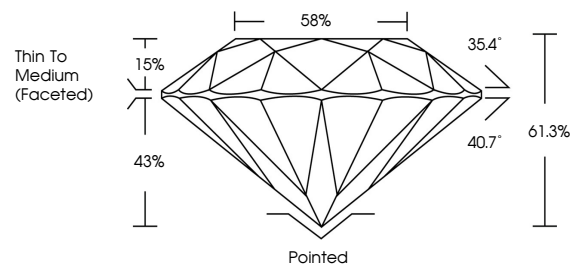
LG756597115  
Report verification at igi.org



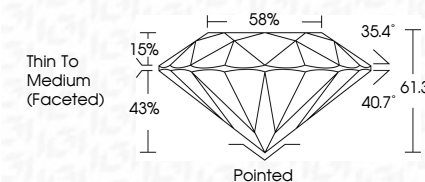
December 30, 2025  
IGI Report Number **LG756597115**  
Description **LABORATORY GROWN DIAMOND**  
Shape and Cutting Style **ROUND BRILLIANT**  
Measurements **6.47 - 6.52 X 3.98 MM**  
**GRADING RESULTS**  
Carat Weight **1.03 CARAT**  
Color Grade **F**  
Clarity Grade **VVS 1**  
Cut Grade **IDEAL**

December 30, 2025  
IGI Report Number **LG756597115**  
Description **LABORATORY GROWN DIAMOND**  
Shape and Cutting Style **ROUND BRILLIANT**  
Measurements **6.47 - 6.52 X 3.98 MM**  
**GRADING RESULTS**  
Carat Weight **1.03 CARAT**  
Color Grade **F**  
Clarity Grade **VVS 1**  
Cut Grade **IDEAL**

**PROPORTIONS**



Sample Image Used



**ADDITIONAL GRADING INFORMATION**  
Polish **EXCELLENT**  
Symmetry **EXCELLENT**  
Fluorescence **NONE**  
Inscription(s) **IGI LG756597115**

Comments: This Laboratory Grown Diamond was created by Chemical Vapor Deposition (CVD) growth process. Type IIa

**COLOR**

D E F G H I J Faint Very Light Light

**CLARITY**

FL	IF	VVS <sup>1-2</sup>	VS <sup>1-2</sup>	SI <sup>1-2</sup>	I <sup>1-3</sup>
Flawless	Internally Flawless	Very Very Slightly Included	Very Slightly Included	Slightly Included	Included

**ADDITIONAL GRADING INFORMATION**

Polish **EXCELLENT**  
Symmetry **EXCELLENT**  
Fluorescence **NONE**  
Inscription(s) **IGI LG756597115**  
Comments: This Laboratory Grown Diamond was created by Chemical Vapor Deposition (CVD) growth process. Type IIa



**IGI**



December 30, 2025  
IGI Report No **LG756597115**  
**ROUND BRILLIANT**  
6.47 - 6.52 X 3.98 MM  
1.03 CARAT  
Color Grade **F**  
Clarity Grade **VVS 1**  
Depth **IDEAL**  
Table **61.3%**  
Girdle **88%**  
Thin To Medium (Faceted)  
Culet **Pointed**  
Polish **EXCELLENT**  
Symmetry **EXCELLENT**  
Fluorescence **NONE**  
Inscriptions(s) **IGI LG756597115**  
Comments: This Laboratory Grown Diamond was created by Chemical Vapor Deposition (CVD) growth process. Type IIa