

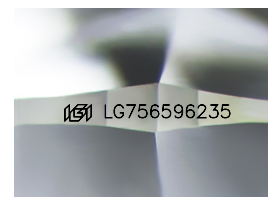
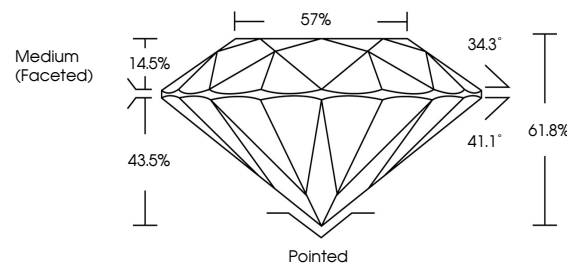


ELECTRONIC COPY

LABORATORY GROWN DIAMOND REPORT

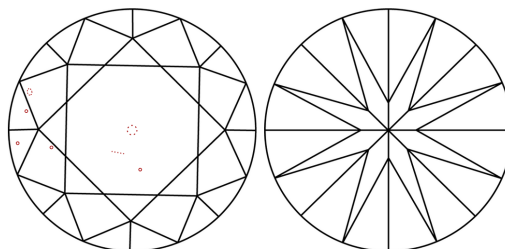
LG756596235
Report verification at lgi.org

PROPORTIONS



Sample Image Used

CLARITY CHARACTERISTICS



KEY TO SYMBOLS

Red symbols indicate internal characteristics.
Green symbols indicate external characteristics.



www.igi.org

LABORATORY GROWN DIAMOND REPORT



December 17, 2025

IGI Report Number LG756596235

Description **LABORATORY GROWN DIAMOND**Shape and Cutting Style **ROUND BRILLIANT**

Measurements 11.70 - 11.73 X 7.24 MM

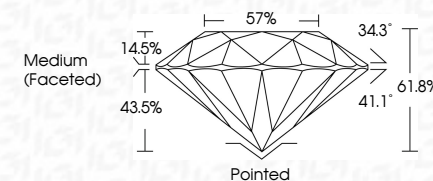
GRADING RESULTS

Carat Weight 6.06 CARATS

Color Grade

Clarity Grade VS 1

Cut Grade **IDEAL**



ADDITIONAL GRADING INFORMATION

Polish EXCELLENT

Symmetry **EXCELLENT**Fluorescence **NONE**Inscription(s)  LG756596235

Comments: HEARTS & ARROWS

Comments: HEARTS & ARROWS
This Laboratory Grown Diamond was created by
Chemical Vapor Deposition (CVD) growth process.
Type IIa



December 17, 2005	GL Report No. LG76569235	ROUND BRILLIANT	11.70 - 11.73 X 7.24 MM	Carat Weight Color Grade Clarity Grade Cut Grade Depth Table Girdle	6.06 CARATS D VS 1 IDEAL 61.8% 57% Medium (Faceted)	Pointed EXCELLENT EXCELLENT NONE lg9 LG76569235	Comments: HEARS & ARROWS Diamond used in the creation of the Cartier Jewelry is certified by GIA as being free of treatment and of any inclusions that may affect the diamond's value or durability.
-------------------	--------------------------	-----------------	-------------------------	---	---	---	---

© IGI 2020, International Gemological Institute

FD - 10 20



THIS DOCUMENT WAS PRODUCED WITH THE FOLLOWING SECURITY MEASURES: SPECIAL DOCUMENT PAPER, INK SCREENS, WATERMARK, BACKGROUND DESIGNS, HOLOGRAM AND OTHER SECURITY FEATURES NOT LISTED AND DO EXCEED DOCUMENT SECURITY INDUSTRY GUIDELINES