



**ELECTRONIC COPY**

## LABORATORY GROWN DIAMOND REPORT

December 15, 2025	
IGI Report Number	LG756595552
Description	LABORATORY GROWN DIAMOND
Shape and Cutting Style	ROUND BRILLIANT
Measurements	7.98 - 8.01 X 4.96 MM

## GRADING RESULTS

Carat Weight	2.00 CARATS
Color Grade	F
Clarity Grade	VS 1
Cut Grade	EXCELLENT

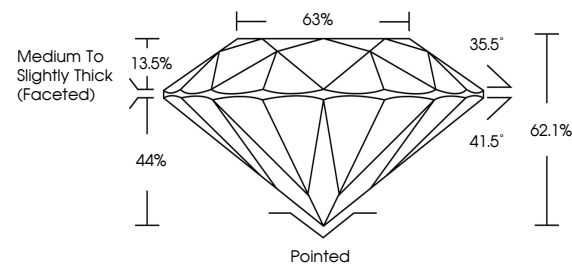
### ADDITIONAL GRADING INFORMATION

Polish	EXCELLENT
Symmetry	EXCELLENT
Fluorescence	NONE
Inscription(s)	 LG756595552

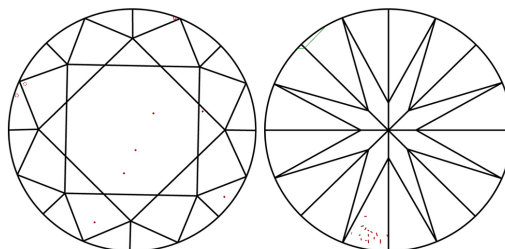
Comments: This Laboratory Grown Diamond was created by Chemical Vapor Deposition (CVD) growth process.  
Type IIa

LG756595552  
Report verification at [igi.org](https://igi.org)

## PROPORTIONS

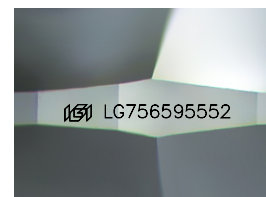


## CLARITY CHARACTERISTICS



### KEY TO SYMBOLS

Red symbols indicate internal characteristics.  
Green symbols indicate external characteristics.



Sample Image Used

## COLOR

D E F G H I J Faint Very Light Light

## CLARITY

FL	IF	VVS <sup>1-2</sup>	VS <sup>1-2</sup>	SI <sup>1-2</sup>	I <sup>1-3</sup>
Flawless	Internally Flawless	Very Very Slightly Included	Very Slightly Included	Slightly Included	Included

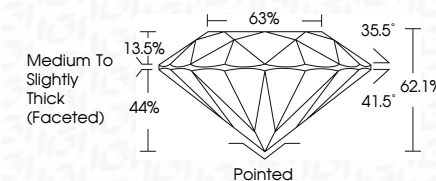
## LABORATORY GROWN DIAMOND REPORT



December 15, 2025	
IGI Report Number	LG75659552
Description	LABORATORY GROWN DIAMOND
Shape and Cutting Style	ROUND BRILLIANT
Measurements	7.98 - 8.01 X 4.96 MM

## GRADING RESULTS

Carat Weight	2.00 CARATS
Color Grade	F
Clarity Grade	VS 1
Cut Grade	EXCELLENT



### ADDITIONAL GRADING INFORMATION

Polish	EXCELLENT
Symmetry	EXCELLENT
Fluorescence	NONE
Inscription(s)	<del>(G)</del> LG756595552
<p>Comments: This Laboratory Grown Diamond was created by Chemical Vapor Deposition (CVD) growth process.</p> <p>Type IIa</p>	



© IGI 2020, International Gemological Institute

FD - 10 20



THIS DOCUMENT WAS PRODUCED WITH THE FOLLOWING SECURITY MEASURES: SPECIAL DOCUMENT PAPER, INK SCREENS, WATERMARK, BACKGROUND DESIGNS, HOLOGRAM AND OTHER SECURITY FEATURES NOT LISTED AND DO EXCEED DOCUMENT SECURITY INDUSTRY GUIDELINES

**www.igi.org**

December 15, 2025  
IGI Report No LG756595552  
ROUND BRILLIANT

ROUND BRILLIANT	7.98 - 8.01 X 4.95 MM		2.00 CARATS	
	Carat Weight			
	Color Grade			
	Clarity Grade		VS 1	
	Cut Grade		EXCELLENT	
	Depth		62.1%	
	Table		65%	
	Girdle		Medium To Slightly Thick (Faceted)	
	Culet		Pointed	
	Polish		EXCELLENT	
Symmetry		EXCELLENT		
Fluorescence		NONE		

**Comments:**  
This Laboratory Grown Diamond was  
created by Chemical Vapor Deposition  
(CVD) growth process.