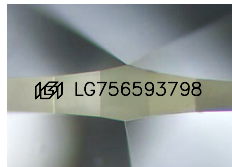




December 16, 2025
IGI Report Number LG756593798
OVAL BRILLIANT
LABORATORY GROWN DIAMOND
6.59 X 4.64 X 2.81 MM
 Carat Weight **0.54 CARAT**
 Color Grade **H**
 Clarity Grade **VS 1**
 Polish **EXCELLENT**
 Symmetry **EXCELLENT**
 Fluorescence **NONE**
 Inscription(s) **IGI LG756593798**

LABORATORY GROWN DIAMOND REPORT

December 16, 2025
 IGI Report Number **LG756593798**
 Description **LABORATORY GROWN DIAMOND**
 Shape and Cutting Style **OVAL BRILLIANT**
 Measurements **6.59 X 4.64 X 2.81 MM**



Sample Image Used

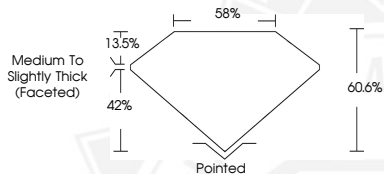
GRADING RESULTS

Carat Weight **0.54 CARAT**
 Color Grade **H**
 Clarity Grade **VS 1**

ADDITIONAL GRADING INFORMATION

Polish **EXCELLENT**
 Symmetry **EXCELLENT**
 Fluorescence **NONE**
 Inscription(s) **IGI LG756593798**

Comments: This Laboratory Grown Diamond was created by Chemical Vapor Deposition (CVD) growth process. Type IIa



December 16, 2025
IGI Report Number LG756593798
OVAL BRILLIANT
LABORATORY GROWN DIAMOND
6.59 X 4.64 X 2.81 MM
 Carat Weight **0.54 CARAT**
 Color Grade **H**
 Clarity Grade **VS 1**
 Polish **EXCELLENT**
 Symmetry **EXCELLENT**
 Fluorescence **NONE**
 Inscription(s) **IGI LG756593798**

Comments: This Laboratory Grown Diamond was created by Chemical Vapor Deposition (CVD) growth process. Type IIa



THIS DOCUMENT WAS PRODUCED WITH THE FOLLOWING SECURITY MEASURES: SPECIAL DOCUMENT PAPER, INK SCREENS, WATERMARK, BACKGROUND DESIGNS, HOLOGRAM AND OTHER SECURITY FEATURES NOT LISTED AND DO EXCEED DOCUMENT SECURITY INDUSTRY GUIDELINES.