



# INTERNATIONAL GEMOLOGICAL INSTITUTE

ELECTRONIC COPY

## LABORATORY GROWN DIAMOND REPORT

December 18, 2025

IGI Report Number

LG756592715

Description

LABORATORY GROWN DIAMOND

Shape and Cutting Style

OVAL BRILLIANT

Measurements

5.47 X 3.78 X 2.33 MM

### GRADING RESULTS

Carat Weight

0.32 CARAT

Color Grade

D

Clarity Grade

VS 1

### ADDITIONAL GRADING INFORMATION

Polish

GOOD

Symmetry

GOOD

Fluorescence

NONE

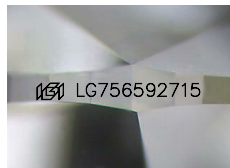
Inscription(s)

IGI LG756592715

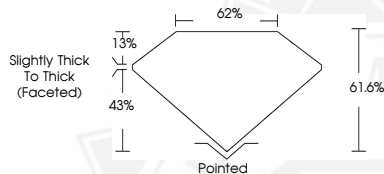
Comments: As Grown - No indication of post-growth treatment.

This Laboratory Grown Diamond was created by High Pressure High Temperature (HPHT) growth process.

Type II



Sample Image Used



December 18, 2025

IGI Report Number LG756592715

OVAL BRILLIANT

LABORATORY GROWN DIAMOND

5.47 X 3.78 X 2.33 MM

Carat Weight 0.32 CARAT

Color Grade D

Clarity Grade VS 1

Polish GOOD

Symmetry GOOD

Fluorescence NONE

Inscription(s) IGI LG756592715

Comments: As Grown - No indication of post-growth treatment. This Laboratory Grown Diamond was created by High Pressure High Temperature (HPHT) growth process. Type II



December 18, 2025

IGI Report Number LG756592715

OVAL BRILLIANT

LABORATORY GROWN DIAMOND

5.47 X 3.78 X 2.33 MM

Carat Weight 0.32 CARAT

Color Grade D

Clarity Grade VS 1

Polish GOOD

Symmetry GOOD

Fluorescence NONE

Inscription(s) IGI LG756592715

Comments: As Grown - No indication of post-growth treatment. This Laboratory Grown Diamond was created by High Pressure High Temperature (HPHT) growth process. Type II



THIS DOCUMENT WAS PRODUCED WITH THE FOLLOWING SECURITY MEASURES: SPECIAL DOCUMENT PAPER, INK SCREENS, WATERMARK, BACKGROUND DESIGNS, HOLOGRAM AND OTHER SECURITY FEATURES NOT LISTED AND DO EXCEED DOCUMENT SECURITY INDUSTRY GUIDELINES.

For terms & conditions and to verify this report, please visit [www.igi.org](http://www.igi.org)