



ELECTRONIC COPY

LABORATORY GROWN DIAMOND REPORT

December 13, 2025
IGI Report Number **LG756591084**
Description **LABORATORY GROWN DIAMOND**
Shape and Cutting Style **CUT CORNERED RECTANGULAR MODIFIED BRILLIANT**
Measurements **15.37 X 10.67 X 7.10 MM**

GRADING RESULTS

Carat Weight **10.35 CARATS**
Color Grade **F**
Clarity Grade **VVS 2**

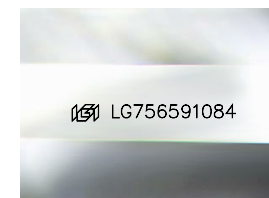
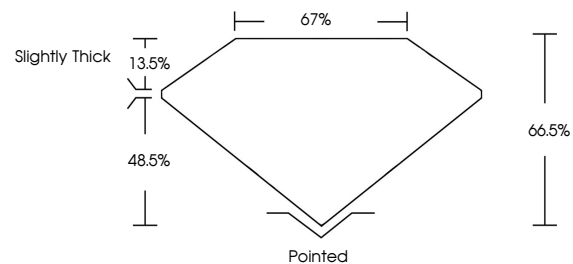
ADDITIONAL GRADING INFORMATION

Polish **EXCELLENT**
Symmetry **EXCELLENT**
Fluorescence **NONE**

Inscription(s) **IGI LG756591084**

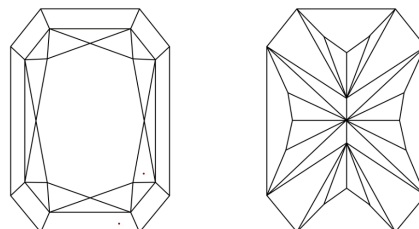
Comments: This Laboratory Grown Diamond was created by Chemical Vapor Deposition (CVD) growth process. Type IIa

PROPORTIONS



Sample Image Used

CLARITY CHARACTERISTICS



KEY TO SYMBOLS

Red symbols indicate internal characteristics.
Green symbols indicate external characteristics.

COLOR

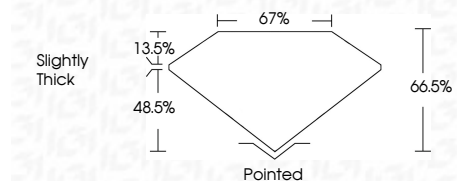
D E F G H I J Faint Very Light Light

CLARITY

FL	IF	VVS ¹⁻²	VS ¹⁻²	SI ¹⁻²	I ¹⁻³
Flawless	Internally Flawless	Very Very Slightly Included	Very Slightly Included	Slightly Included	Included



December 13, 2025
IGI Report Number **LG756591084**
Description **LABORATORY GROWN DIAMOND**
Shape and Cutting Style **CUT CORNERED RECTANGULAR MODIFIED BRILLIANT**
Measurements **15.37 X 10.67 X 7.10 MM**
GRADING RESULTS
Carat Weight **10.35 CARATS**
Color Grade **F**
Clarity Grade **VVS 2**



ADDITIONAL GRADING INFORMATION

Polish **EXCELLENT**
Symmetry **EXCELLENT**
Fluorescence **NONE**
Inscription(s) **IGI LG756591084**
Comments: This Laboratory Grown Diamond was created by Chemical Vapor Deposition (CVD) growth process. Type IIa



IGI



December 13, 2025
IGI Report No. LG756591084
CUT CORNERED RECT. MODIFIED BRILLIANT
15.37 X 10.67 X 7.10 MM
10.35 CARATS
F
VVS 2
66.5%
48.5%
67%
Slightly Thick
Pointed
EXCELLENT
EXCELLENT
NONE
IGI LG756591084

Comments: This Laboratory Grown Diamond was created by Chemical Vapor Deposition (CVD) growth process. Type IIa