



ELECTRONIC COPY

LABORATORY GROWN DIAMOND REPORT

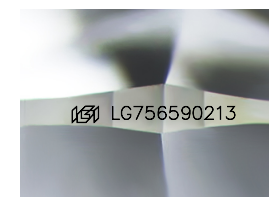
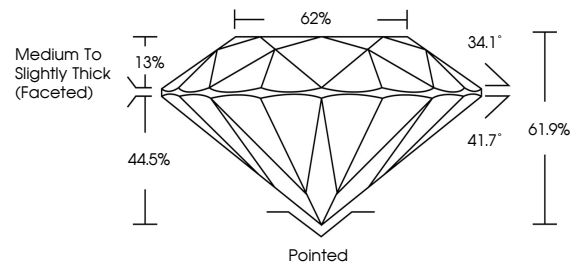
December 13, 2025
 IGI Report Number **LG756590213**
 Description **LABORATORY GROWN DIAMOND**
 Shape and Cutting Style **ROUND BRILLIANT**
 Measurements **9.27 - 9.34 X 5.76 MM**
GRADING RESULTS
 Carat Weight **3.09 CARATS**
 Color Grade **E**
 Clarity Grade **VS 1**
 Cut Grade **EXCELLENT**

ADDITIONAL GRADING INFORMATION

Polish **EXCELLENT**
 Symmetry **EXCELLENT**
 Fluorescence **NONE**
 Inscription(s) **LG756590213**

Comments: This Laboratory Grown Diamond was created by Chemical Vapor Deposition (CVD) growth process. Type IIa

PROPORTIONS



Sample Image Used

COLOR

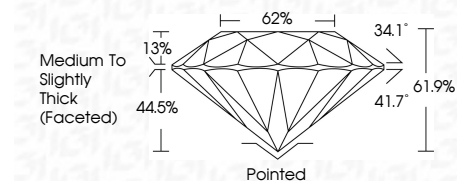
D E F G H I J Faint Very Light Light

CLARITY

FL	IF	VS ¹⁻²	VS ¹⁻²	SI ¹⁻²	I ¹⁻³
Flawless	Internally Flawless	Very Very Slightly Included	Very Slightly Included	Slightly Included	Included



December 13, 2025
 IGI Report Number **LG756590213**
 Description **LABORATORY GROWN DIAMOND**
 Shape and Cutting Style **ROUND BRILLIANT**
 Measurements **9.27 - 9.34 X 5.76 MM**
GRADING RESULTS
 Carat Weight **3.09 CARATS**
 Color Grade **E**
 Clarity Grade **VS 1**
 Cut Grade **EXCELLENT**



ADDITIONAL GRADING INFORMATION

Polish **EXCELLENT**
 Symmetry **EXCELLENT**
 Fluorescence **NONE**
 Inscription(s) **LG756590213**
 Comments: This Laboratory Grown Diamond was created by Chemical Vapor Deposition (CVD) growth process. Type IIa



December 13, 2025
 IGI Report No LG756590213
ROUND BRILLIANT
 9.27 - 9.34 X 5.76 MM
 3.09 CARATS
 E
 VS 1
 EXCELLENT
 61.9%
 62%
 Medium To Slightly Thick (Faceted)
 Pointed
 EXCELLENT
 EXCELLENT
 NONE
 NONE
 IGI LG756590213
 Comments: This Laboratory Grown Diamond was created by Chemical Vapor Deposition (CVD) growth process. Type IIa