



**ELECTRONIC COPY**

## LABORATORY GROWN DIAMOND REPORT

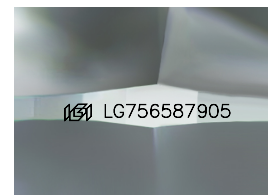
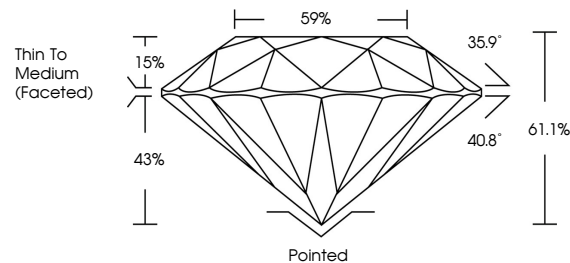
LG756587905  
Report verification at [igi.org](https://igi.org)

|                         |                          |
|-------------------------|--------------------------|
| December 26, 2025       |                          |
| IGI Report Number       | LG756587905              |
| Description             | LABORATORY GROWN DIAMOND |
| Shape and Cutting Style | ROUND BRILLIANT          |
| Measurements            | 9.30 - 9.38 X 5.71 MM    |
| GRADING RESULTS         |                          |
| Carat Weight            | 3.05 CARATS              |
| Color Grade             | D                        |
| Clarity Grade           | VVS 1                    |
| Cut Grade               | IDEAL                    |

### ADDITIONAL GRADING INFORMATION

|                |   |
|----------------|---|
| Polish         | EXCELLENT   |
| Symmetry       | EXCELLENT   |
| Fluorescence   | NONE  |
| Inscription(s) |  LG756587905 |

Comments: HEARTS & ARROWS  
As Grown - No indication of post-growth treatment.  
This Laboratory Grown Diamond was created by High  
Pressure High Temperature (HPHT) growth process.  
Type II



Sample Image Used

## COLOR

D E F G H I J Faint Very Light Light

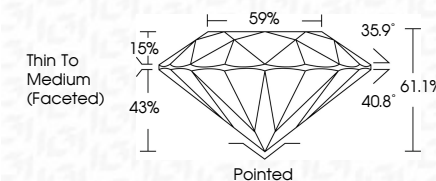
## CLARITY

| FL       | IF                  | VVS <sup>1-2</sup>          | VS <sup>1-2</sup>      | SI <sup>1-2</sup> | I <sup>1-3</sup> |
|----------|---------------------|-----------------------------|------------------------|-------------------|------------------|
| Flawless | Internally Flawless | Very Very Slightly Included | Very Slightly Included | Slightly Included | Included         |

## LABORATORY GROWN DIAMOND REPORT



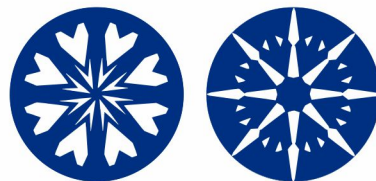
|                         |                          |
|-------------------------|--------------------------|
| December 26, 2025       |                          |
| IGI Report Number       | LG756587905              |
| Description             | LABORATORY GROWN DIAMOND |
| Shape and Cutting Style | ROUND BRILLIANT          |
| Measurements            | 9.30 - 9.38 X 5.71 MM    |
| GRADING RESULTS         |                          |
| Carat Weight            | 3.05 CARATS              |
| Color Grade             | D                        |
| Clarity Grade           | VVS1                     |
| Cut Grade               | IDEAL                    |



### ADDITIONAL GRADING INFORMATION

|                |   |
|----------------|---|
| Polish         | EXCELLENT   |
| Symmetry       | EXCELLENT   |
| Fluorescence   | NONE  |
| Inscription(s) |  LG756587905 |

Comments: HEARTS & ARROWS  
As Grown - No indication of post-growth treatment.  
This Laboratory Grown Diamond was created by High  
Pressure High Temperature (HPHT) growth process.  
Type II



**www.igi.org**



© IGI 2020, International Gemological Institute

FD - 10 20



THIS DOCUMENT WAS PRODUCED WITH THE FOLLOWING SECURITY MEASURES: SPECIAL DOCUMENT PAPER, INK SCREENS, WATERMARK, BACKGROUND DESIGNS, HOLOGRAM AND OTHER SECURITY FEATURES NOT LISTED AND DO EXCEED DOCUMENT SECURITY INDUSTRY GUIDELINES



December 26, 2025  
IGI Report No LG756587905  
ROUND BRILLIANT

|                              |                    |          |
|------------------------------|--------------------|----------|
| <b>9.30 - 9.38 X 5.71 MM</b> | <b>3.05 CARATS</b> | <b>D</b> |
| Carat Weight                 | VVS 1              |          |
| Color Grade                  | IDEAL              |          |
| Clarity Grade                | 61.1%              |          |
| Cut Grade                    | 59%                |          |
| Depth                        | Thin To Medium     |          |
| Table                        | (faceted)          |          |
| Girdle                       | Poined             |          |
| Culet                        | EXCELLENT          |          |
| Polish                       | EXCELLENT          |          |
| Symmetry                     | NONE               |          |
| Fluorescence                 | None               |          |
| Measurements                 | 9.30-9.38x5.71mm   |          |

**Comments:**  
HEARTS & ARROWS  
As Grown - No Indication of post-growth  
treatment  
This Laboratory Grown Diamond was  
created by High Pressure High  
Temperature (HPHT) growth process.