



**ELECTRONIC COPY**

LG756586629  
Report verification at igi.org



December 15, 2025

IGI Report Number **LG756586629**

Description **LABORATORY GROWN DIAMOND**

Shape and Cutting Style **ROUND BRILLIANT**

Measurements **7.25 - 7.29 X 4.51 MM**

**GRADING RESULTS**

Carat Weight **1.48 CARAT**

Color Grade **D**

Clarity Grade **VVS 2**

Cut Grade **IDEAL**

December 15, 2025  
IGI Report Number **LG756586629**  
Description **LABORATORY GROWN DIAMOND**  
Shape and Cutting Style **ROUND BRILLIANT**  
Measurements **7.25 - 7.29 X 4.51 MM**

**GRADING RESULTS**

Carat Weight **1.48 CARAT**

Color Grade **D**

Clarity Grade **VVS 2**

Cut Grade **IDEAL**

**ADDITIONAL GRADING INFORMATION**

Polish **EXCELLENT**

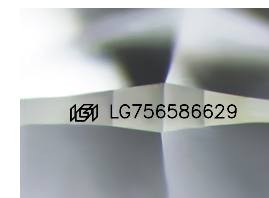
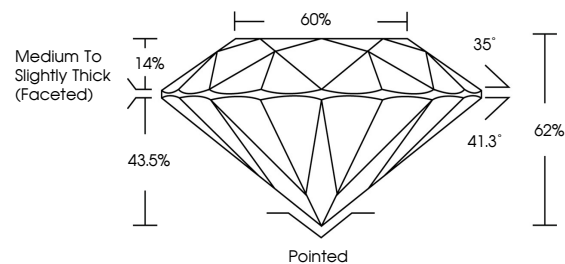
Symmetry **EXCELLENT**

Fluorescence **NONE**

Inscription(s) **IGI LG756586629**

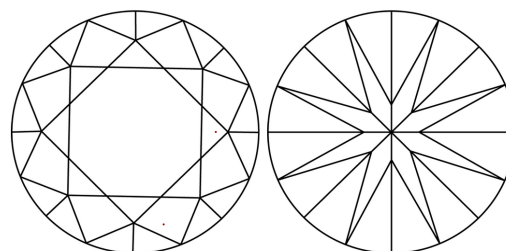
Comments: This Laboratory Grown Diamond was created by Chemical Vapor Deposition (CVD) growth process. Type IIa

**PROPORTIONS**



Sample Image Used

**CLARITY CHARACTERISTICS**



**KEY TO SYMBOLS**

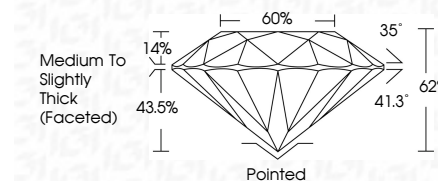
Red symbols indicate internal characteristics.  
Green symbols indicate external characteristics.

**COLOR**

D E F G H I J Faint Very Light Light

**CLARITY**

FL	IF	VVS <sup>1-2</sup>	VS <sup>1-2</sup>	SI <sup>1-2</sup>	I <sup>1-3</sup>
Flawless	Internally Flawless	Very Very Slightly Included	Very Slightly Included	Slightly Included	Included



**ADDITIONAL GRADING INFORMATION**

Polish **EXCELLENT**

Symmetry **EXCELLENT**

Fluorescence **NONE**

Inscription(s) **IGI LG756586629**

Comments: This Laboratory Grown Diamond was created by Chemical Vapor Deposition (CVD) growth process. Type IIa



**IGI**



December 15, 2025  
IGI Report No LG756586629  
ROUND BRILLIANT

1.48 CARAT  
D

Color Grade  
VVS 2  
IDEAL

Depth  
62%

Table  
60%

Medium To Slightly Thick (Faceted)

Culet  
Pointed  
EXCELLENT

Polish  
EXCELLENT

Symmetry  
EXCELLENT

Fluorescence  
NONE

Inscription(s)  
IGI LG756586629

Comments: This Laboratory Grown Diamond was created by Chemical Vapor Deposition (CVD) growth process. Type IIa