



ELECTRONIC COPY

LG756584510
Report verification at igi.org



December 16, 2025
IGI Report Number **LG756584510**
Description **LABORATORY GROWN DIAMOND**
Shape and Cutting Style **SQUARE CUSHION MODIFIED BRILLIANT**
Measurements **7.18 X 6.90 X 4.64 MM**
GRADING RESULTS
Carat Weight **2.12 CARATS**
Color Grade **FANCY VIVID BROWN PINK**
Clarity Grade **VVS 2**

December 16, 2025
IGI Report Number **LG756584510**
Description **LABORATORY GROWN DIAMOND**
Shape and Cutting Style **SQUARE CUSHION MODIFIED BRILLIANT**
Measurements **7.18 X 6.90 X 4.64 MM**

GRADING RESULTS

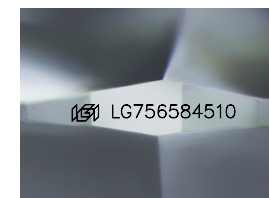
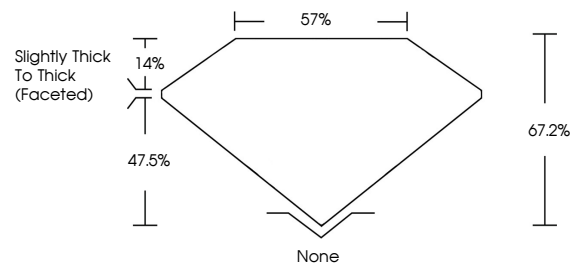
Carat Weight **2.12 CARATS**
Color Grade **FANCY VIVID BROWN PINK**
Clarity Grade **VVS 2**

ADDITIONAL GRADING INFORMATION

Polish **EXCELLENT**
Symmetry **EXCELLENT**
Fluorescence **SLIGHT**
Inscription(s) **IGI LG756584510**

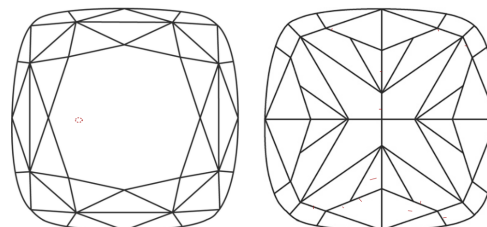
Comments: This Laboratory Grown Diamond was created by Chemical Vapor Deposition (CVD) growth process. Indications of post-growth treatment.

PROPORTIONS



Sample Image Used

CLARITY CHARACTERISTICS



KEY TO SYMBOLS

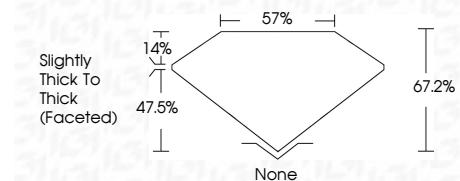
Red symbols indicate internal characteristics.
Green symbols indicate external characteristics.

COLOR

D E F G H I J Faint Very Light Light

CLARITY

FL	IF	VVS ¹⁻²	VS ¹⁻²	SI ¹⁻²	I ¹⁻³
Flawless	Internally Flawless	Very Very Slightly Included	Very Slightly Included	Slightly Included	Included



ADDITIONAL GRADING INFORMATION

Polish **EXCELLENT**
Symmetry **EXCELLENT**
Fluorescence **SLIGHT**
Inscription(s) **IGI LG756584510**
Comments: This Laboratory Grown Diamond was created by Chemical Vapor Deposition (CVD) growth process. Indications of post-growth treatment.



December 16, 2025
IGI Report No LG756584510
SQUARE CUSHION MODIFIED BRILLIANT
7.18 X 6.90 X 4.64 MM
2.12 CARATS
Carat Weight
Color Grade **FANCY VIVID BROWN PINK**
Clarity Grade **VVS 2**
Depth **67.2%**
Table **57%**
Girdle **Slightly Thick To Thick (Faceted)**
Culet **None**
Polish **EXCELLENT**
Symmetry **EXCELLENT**
Fluorescence **SLIGHT**
Inscription(s) **IGI LG756584510**
Comments: This Laboratory Grown Diamond was created by Chemical Vapor Deposition (CVD) growth process. Indications of post-growth treatment.