



ELECTRONIC COPY

LG756584469
Report verification at igi.org



December 19, 2025
IGI Report Number **LG756584469**
Description **LABORATORY GROWN DIAMOND**
Shape and Cutting Style **SQUARE CUSHION MODIFIED BRILLIANT**
Measurements **7.15 X 7.05 X 4.91 MM**
GRADING RESULTS
Carat Weight **2.14 CARATS**
Color Grade **FANCY VIVID BROWN PINK**
Clarity Grade **VS 2**

December 19, 2025
IGI Report Number **LG756584469**
Description **LABORATORY GROWN DIAMOND**
Shape and Cutting Style **SQUARE CUSHION MODIFIED BRILLIANT**
Measurements **7.15 X 7.05 X 4.91 MM**

GRADING RESULTS

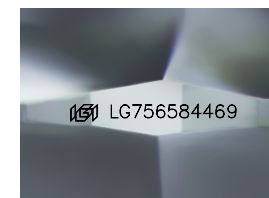
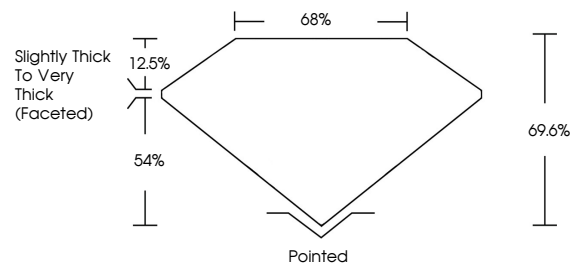
Carat Weight **2.14 CARATS**
Color Grade **FANCY VIVID BROWN PINK**
Clarity Grade **VS 2**

ADDITIONAL GRADING INFORMATION

Polish **EXCELLENT**
Symmetry **EXCELLENT**
Fluorescence **VERY SLIGHT**
Inscription(s) **IGI LG756584469**

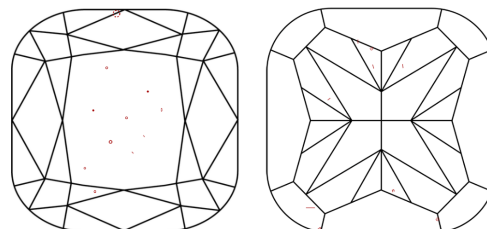
Comments: This Laboratory Grown Diamond was created by Chemical Vapor Deposition (CVD) growth process.
Indications of post-growth treatment.

PROPORTIONS



Sample Image Used

CLARITY CHARACTERISTICS



KEY TO SYMBOLS

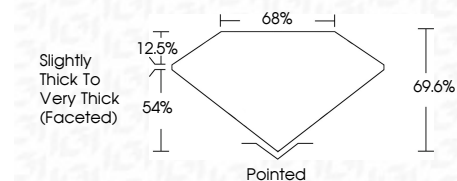
Red symbols indicate internal characteristics.
Green symbols indicate external characteristics.

COLOR

D E F G H I J Faint Very Light Light

CLARITY

FL	IF	VS ¹⁻²	VS ¹⁻²	SI ¹⁻²	I ¹⁻³
Flawless	Internally Flawless	Very Very Slightly Included	Very Slightly Included	Slightly Included	Included



ADDITIONAL GRADING INFORMATION

Polish **EXCELLENT**
Symmetry **EXCELLENT**
Fluorescence **VERY SLIGHT**
Inscription(s) **IGI LG756584469**
Comments: This Laboratory Grown Diamond was created by Chemical Vapor Deposition (CVD) growth process.
Indications of post-growth treatment.



December 19, 2025
IGI Report No **LG756584469**
SQUARE CUSHION MODIFIED BRILLIANT
7.15 X 7.05 X 4.91 MM
Carat Weight **2.14 CARATS**
Color Grade **FANCY VIVID BROWN PINK**
Clarity Grade **VS 2**
Depth **69.6%**
Table **68%**
Girdle **Slightly Thick To Very Thick (Faceted)**
Culet **Pointed**
Polish **EXCELLENT**
Symmetry **EXCELLENT**
Fluorescence **VERY SLIGHT**
Inscription(s) **IGI LG756584469**
Comments: This Laboratory Grown Diamond was created by Chemical Vapor Deposition (CVD) growth process.
Indications of post-growth treatment.