



ELECTRONIC COPY

LG756584466
Report verification at igi.org



December 22, 2025

IGI Report Number **LG756584466**

Description **LABORATORY GROWN DIAMOND**

Shape and Cutting Style **PEAR MIXED CUT**

Measurements **14.69 X 9.07 X 2.18 MM**

GRADING RESULTS

Carat Weight **2.69 CARATS**

Color Grade **L**

Clarity Grade **VS 1**

December 22, 2025
IGI Report Number **LG756584466**
Description **LABORATORY GROWN DIAMOND**
Shape and Cutting Style **PEAR MIXED CUT**
Measurements **14.69 X 9.07 X 2.18 MM**

GRADING RESULTS

Carat Weight **2.69 CARATS**

Color Grade **L**

Clarity Grade **VS 1**

ADDITIONAL GRADING INFORMATION

Polish **VERY GOOD**

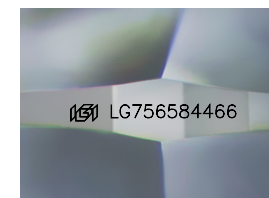
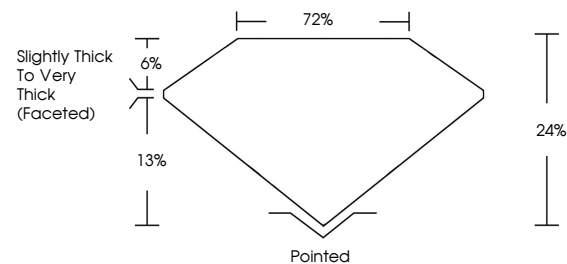
Symmetry **EXCELLENT**

Fluorescence **NONE**

Inscription(s) **IGI LG756584466**

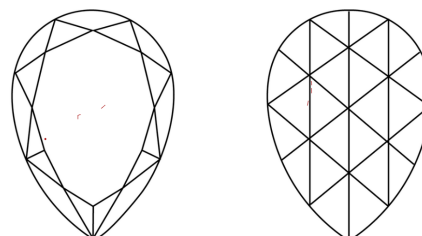
Comments: This Laboratory Grown Diamond was created by Chemical Vapor Deposition (CVD) growth process.
Type IIa

PROPORTIONS



Sample Image Used

CLARITY CHARACTERISTICS



KEY TO SYMBOLS

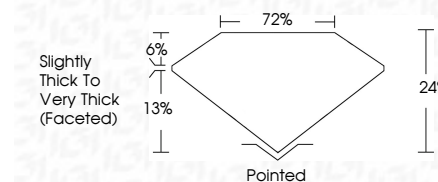
Red symbols indicate internal characteristics.
Green symbols indicate external characteristics.

COLOR

D E F G H I J Faint Very Light Light

CLARITY

FL	IF	VS ¹⁻²	VS ¹⁻²	SI ¹⁻²	I ¹⁻³
Flawless	Internally Flawless	Very Very Slightly Included	Very Slightly Included	Slightly Included	Included



ADDITIONAL GRADING INFORMATION

Polish **VERY GOOD**

Symmetry **EXCELLENT**

Fluorescence **NONE**

Inscription(s) **IGI LG756584466**

Comments: This Laboratory Grown Diamond was created by Chemical Vapor Deposition (CVD) growth process.
Type IIa



December 22, 2025
IGI Report No. **LG756584466**
PEAR MIXED CUT
14.69 X 9.07 X 2.18 MM
2.69 CARATS
L
Color Grade **L**
Clarity Grade **VS 1**
Depth **24%**
Table **72%**
Girdle **Slightly Thick To Very Thick (Faceted)**
Culet **Pointed**
Polish **VERY GOOD**
Symmetry **EXCELLENT**
Fluorescence **NONE**
Inscription(s) **IGI LG756584466**
Comments: This Laboratory Grown Diamond was created by Chemical Vapor Deposition (CVD) growth process.
Type IIa