



ELECTRONIC COPY

LG756584453
Report verification at igi.org



December 19, 2025

IGI Report Number **LG756584453**

Description **LABORATORY GROWN DIAMOND**

Shape and Cutting Style **CUT CORNERED
RECTANGULAR MODIFIED
BRILLIANT**

Measurements **8.62 X 6.15 X 4.47 MM**

GRADING RESULTS

Carat Weight **2.02 CARATS**

Color Grade **FANCY LIGHT YELLOW**

Clarity Grade **VS 2**

December 19, 2025
IGI Report Number **LG756584453**
Description **LABORATORY GROWN DIAMOND**
Shape and Cutting Style **CUT CORNERED RECTANGULAR
MODIFIED BRILLIANT**
Measurements **8.62 X 6.15 X 4.47 MM**

GRADING RESULTS

Carat Weight **2.02 CARATS**

Color Grade **FANCY LIGHT YELLOW**

Clarity Grade **VS 2**

ADDITIONAL GRADING INFORMATION

Polish **EXCELLENT**

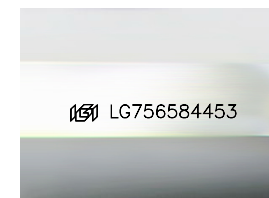
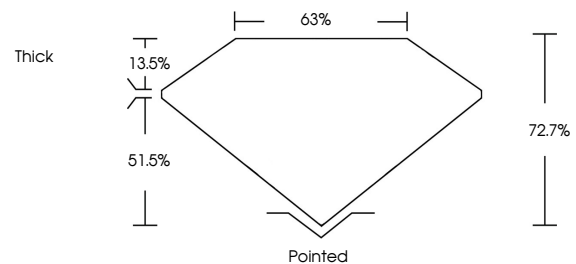
Symmetry **VERY GOOD**

Fluorescence **NONE**

Inscription(s) **IGI LG756584453**

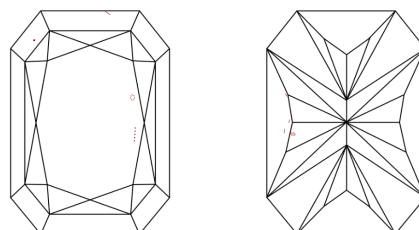
Comments: This Laboratory Grown Diamond was created by Chemical Vapor Deposition (CVD) growth process.

PROPORTIONS



Sample Image Used

CLARITY CHARACTERISTICS



KEY TO SYMBOLS

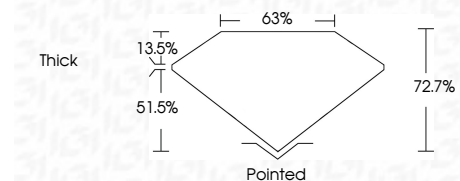
Red symbols indicate internal characteristics.
Green symbols indicate external characteristics.

COLOR

D E F G H I J Faint Very Light Light

CLARITY

FL	IF	VS ¹⁻²	VS ¹⁻²	SI ¹⁻²	I ¹⁻³
Flawless	Internally Flawless	Very Very Slightly Included	Very Slightly Included	Slightly Included	Included



ADDITIONAL GRADING INFORMATION

Polish **EXCELLENT**

Symmetry **VERY GOOD**

Fluorescence **NONE**

Inscription(s) **IGI LG756584453**

Comments: This Laboratory Grown Diamond was created by Chemical Vapor Deposition (CVD) growth process.



IGI



December 19, 2025
IGI Report No LG756584453
CUT CORNERED RECT. MODIFIED BRILLIANT
8.62 X 6.15 X 4.47 MM
2.02 CARATS
FANCY LIGHT YELLOW
VS 2
72.7%
63%
Thick
Pointed
EXCELLENT
VERY GOOD
NONE
IGI LG756584453
Comments: This Laboratory Grown Diamond was created by Chemical Vapor Deposition (CVD) growth process.