



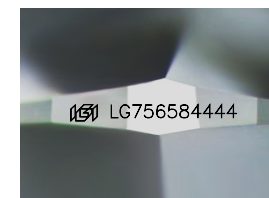
ELECTRONIC COPY

LG756584444
Report verification at igi.org



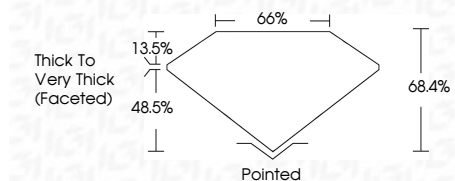
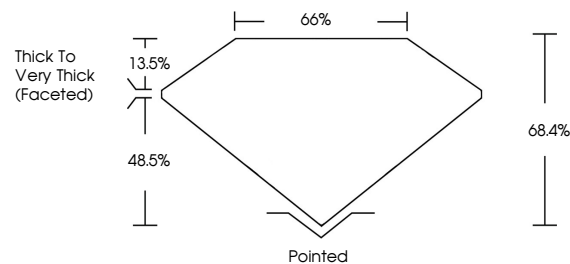
December 19, 2025
IGI Report Number **LG756584444**
Description **LABORATORY GROWN DIAMOND**
Shape and Cutting Style **SQUARE CUSHION MODIFIED BRILLIANT**
Measurements **7.09 X 6.89 X 4.71 MM**

GRADING RESULTS
Carat Weight **2.02 CARATS**
Color Grade **FANCY VIVID BROWN PINK**
Clarity Grade **SI 1**

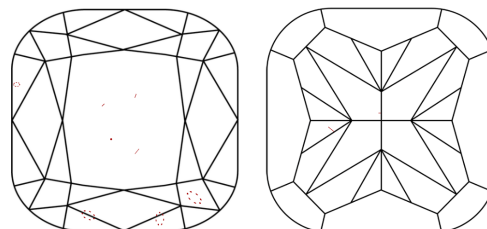


Sample Image Used

PROPORTIONS



CLARITY CHARACTERISTICS



KEY TO SYMBOLS

Red symbols indicate internal characteristics.
Green symbols indicate external characteristics.

COLOR

D E F G H I J Faint Very Light Light

CLARITY

FL	IF	VS ¹⁻²	VS ¹⁻²	SI ¹⁻²	I ¹⁻³
Flawless	Internally Flawless	Very Very Slightly Included	Very Slightly Included	Slightly Included	Included

ADDITIONAL GRADING INFORMATION

Polish **VERY GOOD**
Symmetry **VERY GOOD**
Fluorescence **SLIGHT**
Inscription(s) **IGI LG756584444**
Comments: This Laboratory Grown Diamond was created by Chemical Vapor Deposition (CVD) growth process. Indications of post-growth treatment.

December 19, 2025
IGI Report Number **LG756584444**
Description **LABORATORY GROWN DIAMOND**
Shape and Cutting Style **SQUARE CUSHION MODIFIED BRILLIANT**
Measurements **7.09 X 6.89 X 4.71 MM**

GRADING RESULTS

Carat Weight **2.02 CARATS**
Color Grade **FANCY VIVID BROWN PINK**
Clarity Grade **SI 1**

ADDITIONAL GRADING INFORMATION

Polish **VERY GOOD**
Symmetry **VERY GOOD**
Fluorescence **SLIGHT**
Inscription(s) **IGI LG756584444**

Comments: This Laboratory Grown Diamond was created by Chemical Vapor Deposition (CVD) growth process. Indications of post-growth treatment.



December 19, 2025
IGI Report No LG756584444
SQUARE CUSHION MODIFIED BRILLIANT
7.09 X 6.89 X 4.71 MM
2.02 CARATS
FANCY VIVID BROWN PINK
SI 1
68.4%
66%
Thick to Very Thick (Faceted)
Pointed
VERY GOOD
VERY GOOD
SLIGHT
IGI LG756584444
Comments: This Laboratory Grown Diamond was created by Chemical Vapor Deposition (CVD) growth process. Indications of post-growth treatment.