



ELECTRONIC COPY

LG756584415
Report verification at igi.org



December 19, 2025
IGI Report Number **LG756584415**
Description **LABORATORY GROWN DIAMOND**
Shape and Cutting Style **ROUND BRILLIANT**
Measurements **8.10 - 8.14 X 5.02 MM**
GRADING RESULTS
Carat Weight **2.08 CARATS**
Color Grade **FANCY VIVID BLUE**
Clarity Grade **VS 1**
Cut Grade **EXCELLENT**

December 19, 2025
IGI Report Number **LG756584415**
Description **LABORATORY GROWN DIAMOND**
Shape and Cutting Style **ROUND BRILLIANT**
Measurements **8.10 - 8.14 X 5.02 MM**

GRADING RESULTS

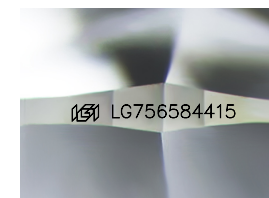
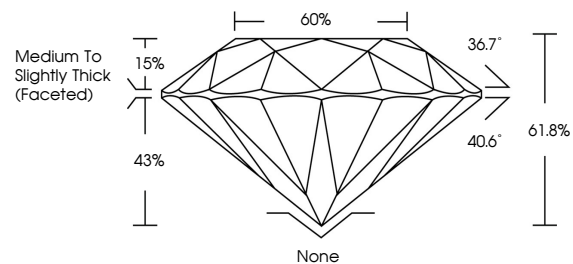
Carat Weight **2.08 CARATS**
Color Grade **FANCY VIVID BLUE**
Clarity Grade **VS 1**
Cut Grade **EXCELLENT**

ADDITIONAL GRADING INFORMATION

Polish **EXCELLENT**
Symmetry **EXCELLENT**
Fluorescence **NONE**
Inscription(s) **LG756584415**

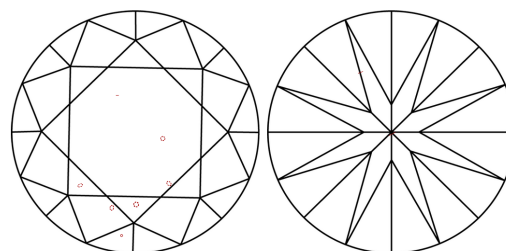
Comments: This Laboratory Grown Diamond was created by Chemical Vapor Deposition (CVD) growth process.
Indications of post-growth treatment.

PROPORTIONS



Sample Image Used

CLARITY CHARACTERISTICS



KEY TO SYMBOLS

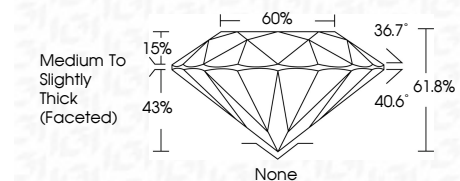
Red symbols indicate internal characteristics.
Green symbols indicate external characteristics.

COLOR

D E F G H I J Faint Very Light Light

CLARITY

FL	IF	VS ¹⁻²	VS ¹⁻²	SI ¹⁻²	I ¹⁻³
Flawless	Internally Flawless	Very Very Slightly Included	Very Slightly Included	Slightly Included	Included



ADDITIONAL GRADING INFORMATION

Polish **EXCELLENT**
Symmetry **EXCELLENT**
Fluorescence **NONE**
Inscription(s) **LG756584415**
Comments: This Laboratory Grown Diamond was created by Chemical Vapor Deposition (CVD) growth process.
Indications of post-growth treatment.



December 19, 2025
IGI Report No **LG756584415**
ROUND BRILLIANT
8.10 - 8.14 X 5.02 MM
Carat Weight **2.08 CARATS**
Color Grade **FANCY VIVID BLUE**
Clarity Grade **VS 1**
Cut Grade **EXCELLENT**
Depth **61.8%**
Table **60%**
Girdle **Medium To Slightly Thick (Faceted)**
Culet **None**
Polish **EXCELLENT**
Symmetry **EXCELLENT**
Fluorescence **NONE**
Inscriptions(s) **IGI LG756584415**
Comments: This Laboratory Grown Diamond was created by Chemical Vapor Deposition (CVD) growth process.
Indications of post-growth treatment.