



**ELECTRONIC COPY**

## LABORATORY GROWN DIAMOND REPORT

December 19, 2025	
IGI Report Number	LG756584399
Description	LABORATORY GROWN DIAMOND
Shape and Cutting Style	PRINCESS CUT
Measurements	7.00 X 6.97 X 4.55 MM

## GRADING RESULTS

Carat Weight	2.01 CARATS
Color Grade	FANCY INTENSE PINK
Clarity Grade	SI 1

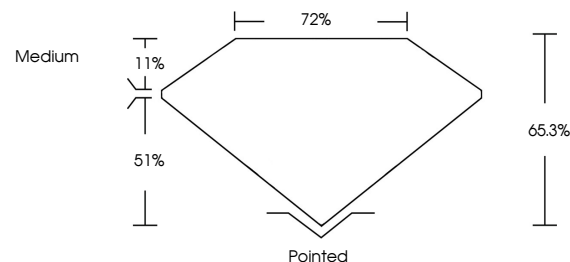
### ADDITIONAL GRADING INFORMATION

Polish	EXCELLENT
Symmetry	EXCELLENT
Fluorescence	SLIGHT
Inscription(s)	15 LG756584399

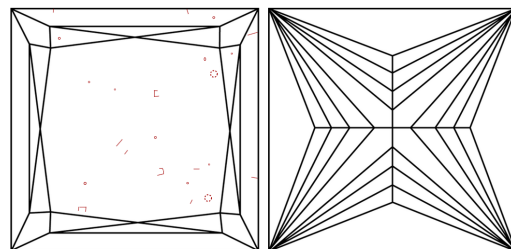
Comments: This Laboratory Grown Diamond was created by Chemical Vapor Deposition (CVD) growth process.  
Indications of post-growth treatment.

LG756584399  
Report verification at [igi.org](https://igi.org)

## PROPORTIONS

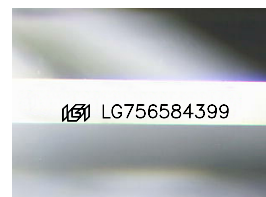


## CLARITY CHARACTERISTICS



### KEY TO SYMBOLS

Red symbols indicate internal characteristics.  
Green symbols indicate external characteristics.



Sample Image Used

## COLOR

D E F G H I J Faint Very Light Light

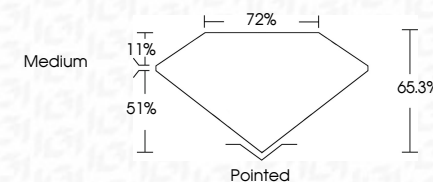
## CLARITY

FL	IF	VVS <sup>1-2</sup>	VS <sup>1-2</sup>	SI <sup>1-2</sup>	I <sup>1-3</sup>
Flawless	Internally Flawless	Very Very Slightly Included	Very Slightly Included	Slightly Included	Included

## LABORATORY GROWN DIAMOND REPORT



December 19, 2025	
IGI Report Number	LG756584399
Description	LABORATORY GROWN DIAMOND
Shape and Cutting Style	PRINCESS CUT
Measurements	7.00 X 6.97 X 4.55 MM
GRADING RESULTS	
Carat Weight	2.01 CARATS
Color Grade	FANCY INTENSE PINK
Clarity Grade	SI 1



### ADDITIONAL GRADING INFORMATION

Polish	EXCELLENT
Symmetry	EXCELLENT
Fluorescence	SLIGHT
Inscription(s)	
<p>Comments: This Laboratory Grown Diamond was created by Chemical Vapor Deposition (CVD) growth process.</p> <p>Indications of post-growth treatment.</p>	



© IGI 2020, International Gemological Institute

FD - 10 20

**www.igi.org**

THIS DOCUMENT WAS PRODUCED WITH THE FOLLOWING SECURITY MEASURES: SPECIAL DOCUMENT PAPER, INK SCREENS, WATERMARK, BACKGROUND DESIGNS, HOLOGRAM AND OTHER SECURITY FEATURES NOT LISTED AND DO EXCEED DOCUMENT SECURITY INDUSTRY GUIDELINE

December 19, 2025  
 LGI Report No LG756584399  
 PRINCESS CUT

.00 X .697 X 4.55 MM		201 CARATS	\$11
Carat Weight		FANCY INTENSE PINK	65.9%
Color Grade			72%
Clarity Grade			Medium
Depth			
Table			
Girdle			
Culet			Pointed
Polish			EXCELLENT
Symmetry			EXCELLENT
Fluorescence			SLIGHT

**Comments:**  
This Laboratory Grown Diamond was  
created by Chemical Vapor Deposition  
(CVD) growth process.