



**ELECTRONIC COPY**

LG756584380  
Report verification at igi.org



December 18, 2025

IGI Report Number **LG756584380**

Description **LABORATORY GROWN DIAMOND**

Shape and Cutting Style **EMERALD CUT**

Measurements **8.59 X 5.95 X 3.60 MM**

**GRADING RESULTS**

Carat Weight **2.00 CARATS**

Color Grade **FANCY INTENSE PINK**

Clarity Grade **VS 2**

December 18, 2025  
IGI Report Number **LG756584380**  
Description **LABORATORY GROWN DIAMOND**  
Shape and Cutting Style **EMERALD CUT**  
Measurements **8.59 X 5.95 X 3.60 MM**

**GRADING RESULTS**

Carat Weight **2.00 CARATS**

Color Grade **FANCY INTENSE PINK**

Clarity Grade **VS 2**

**ADDITIONAL GRADING INFORMATION**

Polish **VERY GOOD**

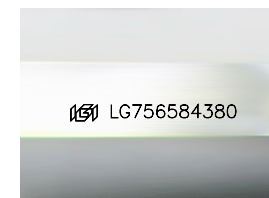
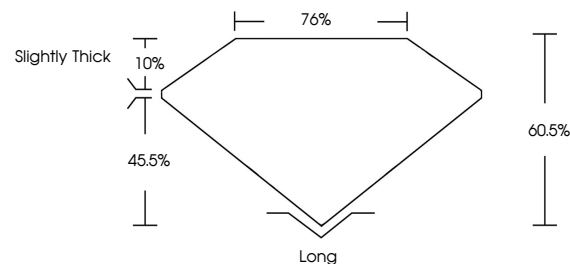
Symmetry **VERY GOOD**

Fluorescence **SLIGHT**

Inscription(s) **LG756584380**

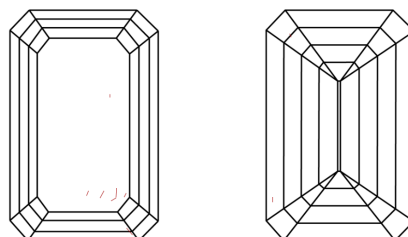
Comments: This Laboratory Grown Diamond was created by Chemical Vapor Deposition (CVD) growth process.  
Indications of post-growth treatment.

**PROPORTIONS**



Sample Image Used

**CLARITY CHARACTERISTICS**



**KEY TO SYMBOLS**

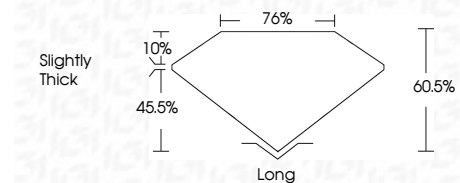
Red symbols indicate internal characteristics.  
Green symbols indicate external characteristics.

**COLOR**

D E F G H I J Faint Very Light Light

**CLARITY**

FL	IF	VS <sup>1-2</sup>	VS <sup>1-2</sup>	SI <sup>1-2</sup>	I <sup>1-3</sup>
Flawless	Internally Flawless	Very Very Slightly Included	Very Slightly Included	Slightly Included	Included



**ADDITIONAL GRADING INFORMATION**

Polish **VERY GOOD**

Symmetry **VERY GOOD**

Fluorescence **SLIGHT**

Inscription(s) **LG756584380**

Comments: This Laboratory Grown Diamond was created by Chemical Vapor Deposition (CVD) growth process.  
Indications of post-growth treatment.



December 18, 2025  
IGI Report No. **LG756584380**  
**EMERALD CUT**  
**2.00 CARATS**  
Carat Weight **FANCY INTENSE PINK**  
Color Grade **VS 2**  
Depth **60.5%**  
Table **76%**  
Girdle **Slightly Thick**  
Culet **Long**  
Polish **VERY GOOD**  
Symmetry **VERY GOOD**  
Fluorescence **SLIGHT**  
Inscription(s) **LG756584380**  
Comments: This Laboratory Grown Diamond was created by Chemical Vapor Deposition (CVD) growth process.  
Indications of post-growth treatment.