



ELECTRONIC COPY

LG756584270
Report verification at igi.org



December 17, 2025
IGI Report Number **LG756584270**
Description **LABORATORY GROWN DIAMOND**
Shape and Cutting Style **CUT CORNERED
RECTANGULAR MODIFIED
BRILLIANT**
Measurements **9.12 X 5.96 X 4.15 MM**
GRADING RESULTS
Carat Weight **2.08 CARATS**
Color Grade **FANCY VIVID PINK**
Clarity Grade **VS 2**

December 17, 2025
IGI Report Number **LG756584270**
Description **LABORATORY GROWN DIAMOND**
Shape and Cutting Style **CUT CORNERED RECTANGULAR
MODIFIED BRILLIANT**
Measurements **9.12 X 5.96 X 4.15 MM**

GRADING RESULTS

Carat Weight **2.08 CARATS**
Color Grade **FANCY VIVID PINK**
Clarity Grade **VS 2**

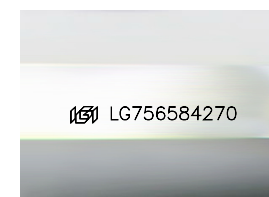
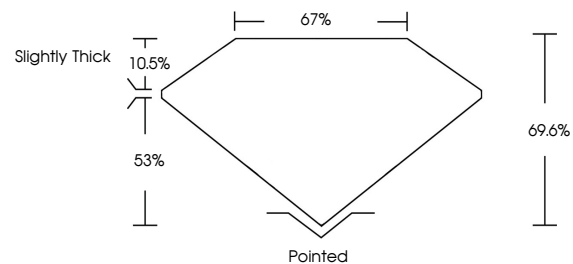
ADDITIONAL GRADING INFORMATION

Polish **VERY GOOD**
Symmetry **VERY GOOD**
Fluorescence **SLIGHT**
Inscription(s) **IGI LG756584270**

Comments: This Laboratory Grown Diamond was created by Chemical Vapor Deposition (CVD) growth process.
Indications of post-growth treatment.

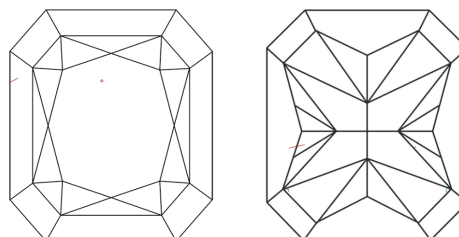
Secondary color: Brown

PROPORTIONS



Sample Image Used

CLARITY CHARACTERISTICS



KEY TO SYMBOLS

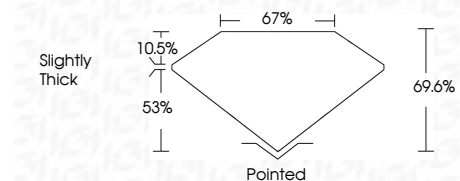
Red symbols indicate internal characteristics.
Green symbols indicate external characteristics.

COLOR

D E F G H I J Faint Very Light Light

CLARITY

FL	IF	VS ¹⁻²	VS ¹⁻²	SI ¹⁻²	I ¹⁻³
Flawless	Internally Flawless	Very Very Slightly Included	Very Slightly Included	Slightly Included	Included



ADDITIONAL GRADING INFORMATION

Polish **VERY GOOD**
Symmetry **VERY GOOD**
Fluorescence **SLIGHT**
Inscription(s) **IGI LG756584270**
Comments: This Laboratory Grown Diamond was created by Chemical Vapor Deposition (CVD) growth process.
Indications of post-growth treatment.
Secondary color: Brown



December 17, 2025
IGI Report No LG756584270
CUT CORNERED RECT. MODIFIED BRILLIANT
9.12 X 5.96 X 4.15 MM
2.08 CARATS
FANCY VIVID PINK
VS 2
69.6%
67%
Slightly Thick
Pointed
VERY GOOD
VERY GOOD
SLIGHT
IGI LG756584270
Comments: This Laboratory Grown Diamond was created by Chemical Vapor Deposition (CVD) growth process.
Indications of post-growth treatment.
Secondary color: Brown