



ELECTRONIC COPY

LG756584269
Report verification at igi.org



December 16, 2025
IGI Report Number **LG756584269**
Description **LABORATORY GROWN DIAMOND**
Shape and Cutting Style **EMERALD CUT**
Measurements **8.96 X 6.01 X 3.62 MM**
GRADING RESULTS
Carat Weight **2.09 CARATS**
Color Grade **FANCY VIVID PINK**
Clarity Grade **SI 1**

December 16, 2025
IGI Report Number **LG756584269**
Description **LABORATORY GROWN DIAMOND**
Shape and Cutting Style **EMERALD CUT**
Measurements **8.96 X 6.01 X 3.62 MM**

GRADING RESULTS

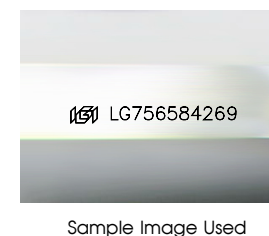
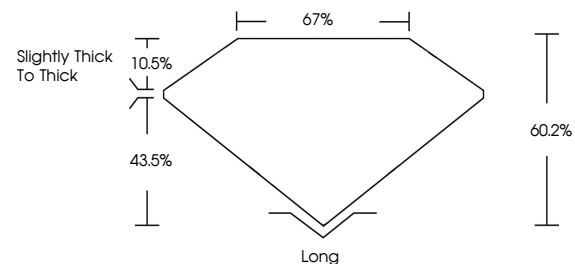
Carat Weight **2.09 CARATS**
Color Grade **FANCY VIVID PINK**
Clarity Grade **SI 1**

ADDITIONAL GRADING INFORMATION

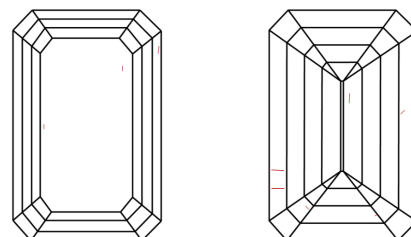
Polish **VERY GOOD**
Symmetry **VERY GOOD**
Fluorescence **STRONG**
Inscription(s) **LG756584269**

Comments: This Laboratory Grown Diamond was created by Chemical Vapor Deposition (CVD) growth process.
Indications of post-growth treatment.

PROPORTIONS



CLARITY CHARACTERISTICS



KEY TO SYMBOLS

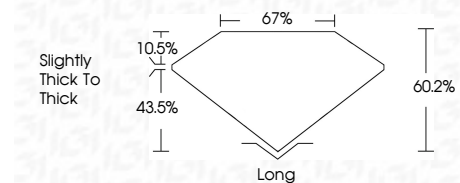
Red symbols indicate internal characteristics.
Green symbols indicate external characteristics.

COLOR

D E F G H I J Faint Very Light Light

CLARITY

| FL | IF | VS ¹⁻² | VS ¹⁻² | SI ¹⁻² | I ¹⁻³ |
|----------|---------------------|-----------------------------|------------------------|-------------------|------------------|
| Flawless | Internally Flawless | Very Very Slightly Included | Very Slightly Included | Slightly Included | Included |



ADDITIONAL GRADING INFORMATION

Polish **VERY GOOD**
Symmetry **VERY GOOD**
Fluorescence **STRONG**
Inscription(s) **LG756584269**
Comments: This Laboratory Grown Diamond was created by Chemical Vapor Deposition (CVD) growth process.
Indications of post-growth treatment.



IGI

December 16, 2025
IGI Report No **LG756584269**
EMERALD CUT
2.09 CARATS
8.96 X 6.01 X 3.62 MM
Color Grade **FANCY VIVID PINK**
Clarity Grade **SI 1**
Depth **60.2%**
Table **67%**
Girdle **Slightly thick to thick**
Culet **Long**
Polish **VERY GOOD**
Symmetry **VERY GOOD**
Fluorescence **STRONG**
Inscription(s) **LG756584269**
Comments: This Laboratory Grown Diamond was created by Chemical Vapor Deposition (CVD) growth process.
Indications of post-growth treatment.