



**ELECTRONIC COPY**

## LABORATORY GROWN DIAMOND REPORT

December 16, 2025	
IGI Report Number	LG756584259
Description	LABORATORY GROWN DIAMOND
Shape and Cutting Style	PRINCESS CUT
Measurements	7.34 X 7.24 X 5.20 MM

## GRADING RESULTS

Carat Weight	2.54 CARATS
Color Grade	FANCY VIVID PINK
Clarity Grade	VS 2

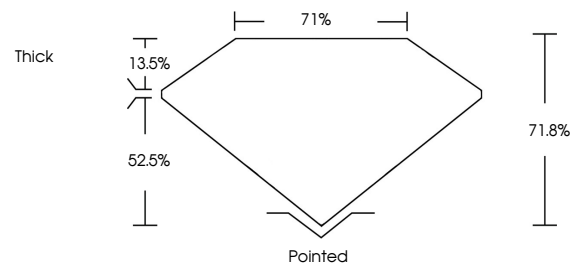
### ADDITIONAL GRADING INFORMATION

Polish	VERY GOOD
Symmetry	EXCELLENT
Fluorescence	STRONG
Inscription(s)	151 LG756584259

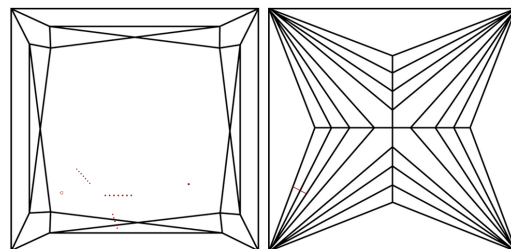
Comments: This Laboratory Grown Diamond was created by Chemical Vapor Deposition (CVD) growth process.  
Indications of post-growth treatment.

LG756584259  
Report verification at [igi.org](https://igi.org)

## PROPORTIONS

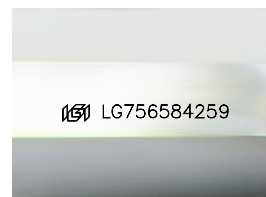


## CLARITY CHARACTERISTICS



### KEY TO SYMBOLS

Red symbols indicate internal characteristics.  
Green symbols indicate external characteristics.



Sample Image Used

## COLOR

D E F G H I J Faint Very Light Light

## CLARITY

FL	IF	VVS <sup>1-2</sup>	VS <sup>1-2</sup>	SI <sup>1-2</sup>	I <sup>1-3</sup>
Flawless	Internally Flawless	Very Very Slightly Included	Very Slightly Included	Slightly Included	Included

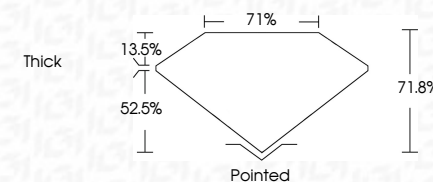
## LABORATORY GROWN DIAMOND REPORT



December 16, 2025	
IGI Report Number	LG756584259
Description	LABORATORY GROWN DIAMOND
Shape and Cutting Style	PRINCESS CUT
Measurements	7.34 X 7.24 X 5.20 MM

## GRADING RESULTS

Carat Weight	2.54 CARATS
Color Grade	FANCY VIVID PINK
Clarity Grade	VS 2



### ADDITIONAL GRADING INFORMATION

Polish	VERY GOOD
Symmetry	EXCELLENT
Fluorescence	STRONG
Inscription(s)	 LG756584259

Comments: This Laboratory Grown Diamond was created by Chemical Vapor Deposition (CVD) growth process.  
Indications of post-growth treatment.



IG



© IGI 2020, International Gemological Institute

FD - 10 20



THIS DOCUMENT WAS PRODUCED WITH THE FOLLOWING SECURITY MEASURES: SPECIAL DOCUMENT PAPER, INK SCREENS, WATERMARK, BACKGROUND DESIGNS, HOLOGRAM AND OTHER SECURITY FEATURES NOT LISTED AND DO EXCEED DOCUMENT SECURITY INDUSTRY GUIDELINES

December 16, 2025  
IGI Report No LG756584259  
PRINCESS CUT

7.54" X 7.24" X 5.20" MM	Carat Weight	2.54 CARATS
	Color Grade	FANCY VIVID PINK
	Clarity Grade	VS 2
	Depth	71.6%
	Table	71%
	Girdle	THICK
	Culet	POINTED
	Polish	VERY GOOD
	Symmetry	EXCELLENT
	Fluorescence	STRONG
	Inscriptions	None (GIA 64561905)

**Comments:**  
This Laboratory Grown Diamond was created by Chemical Vapor Deposition (CVD) growth process.

**www.igi.org**