



LABORATORY GROWN DIAMOND REPORT

December 18, 2025
 IGI Report Number **LG756584014**
 Description **LABORATORY GROWN DIAMOND**
 Shape and Cutting Style **LOZENGE STEP CUT**
 Measurements **5.39 X 5.36 X 2.36 MM**

GRADING RESULTS

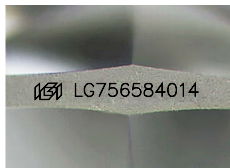
Carat Weight **0.63 CARAT**
 Color Grade **FANCY INTENSE PINK**
 Clarity Grade **VS 2**

ADDITIONAL GRADING INFORMATION

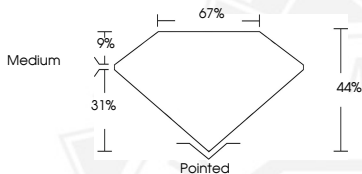
Polish **VERY GOOD**
 Symmetry **VERY GOOD**
 Fluorescence **SLIGHT**
 Inscription(s) **IGI LG756584014**

Comments: This Laboratory Grown Diamond was created by Chemical Vapor Deposition (CVD) growth process. Indications of post-growth treatment.

Secondary color: Brown



Sample Image Used



December 18, 2025
 IGI Report Number **LG756584014**
 LOZENGE STEP CUT
 LABORATORY GROWN DIAMOND
 5.39 X 5.36 X 2.36 MM
 Carat Weight **0.63 CARAT**
 Color Grade **FANCY INTENSE PINK**
 Clarity Grade **VS 2**
 Polish **VERY GOOD**
 Symmetry **VERY GOOD**
 Fluorescence **SLIGHT**
 Inscription(s) **IGI LG756584014**

Comments: This Laboratory Grown Diamond was created by Chemical Vapor Deposition (CVD) growth process. Indications of post-growth treatment. Secondary color: Brown



December 18, 2025
 IGI Report Number **LG756584014**
 LOZENGE STEP CUT
 LABORATORY GROWN DIAMOND
 5.39 X 5.36 X 2.36 MM
 Carat Weight **0.63 CARAT**
 Color Grade **FANCY INTENSE PINK**
 Clarity Grade **VS 2**
 Polish **VERY GOOD**
 Symmetry **VERY GOOD**
 Fluorescence **SLIGHT**
 Inscription(s) **IGI LG756584014**

Comments: This Laboratory Grown Diamond was created by Chemical Vapor Deposition (CVD) growth process. Indications of post-growth treatment. Secondary color: Brown



THIS DOCUMENT WAS PRODUCED WITH THE FOLLOWING SECURITY MEASURES: SPECIAL DOCUMENT PAPER, INK SCREENS, WATERMARK, BACKGROUND DESIGNS, HOLOGRAM AND OTHER SECURITY FEATURES NOT LISTED AND DO EXCEED DOCUMENT SECURITY INDUSTRY GUIDELINES.