



# INTERNATIONAL GEMOLOGICAL INSTITUTE

## LABORATORY GROWN DIAMOND REPORT

December 17, 2025  
IGI Report Number **LG756583866**  
Description **LABORATORY GROWN DIAMOND**  
Shape and Cutting Style **PRINCESS CUT**  
Measurements **4.69 X 4.59 X 2.90 MM**

### GRADING RESULTS

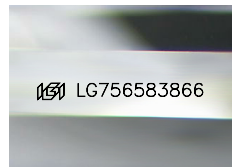
Carat Weight **0.57 CARAT**  
Color Grade **FANCY VIVID BROWNISH PINK**  
Clarity Grade **VS 1**

### ADDITIONAL GRADING INFORMATION

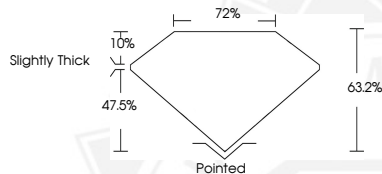
Polish **EXCELLENT**  
Symmetry **VERY GOOD**  
Fluorescence **SLIGHT**  
Inscription(s) **IGI LG756583866**

Comments: This Laboratory Grown Diamond was created by Chemical Vapor Deposition (CVD) growth process. Indications of post-growth treatment.

ELECTRONIC COPY



Sample Image Used



December 17, 2025  
IGI Report Number **LG756583866**  
**PRINCESS CUT**  
**LABORATORY GROWN DIAMOND**  
**4.69 X 4.59 X 2.90 MM**  
Carat Weight **0.57 CARAT**  
Color Grade **FANCY VIVID BROWNISH PINK**  
Clarity Grade **VS 1**  
Polish **EXCELLENT**  
Symmetry **VERY GOOD**  
Fluorescence **SLIGHT**  
Inscription(s) **IGI LG756583866**  
Comments: This Laboratory Grown Diamond was created by Chemical Vapor Deposition (CVD) growth process. Indications of post-growth treatment.



December 17, 2025  
IGI Report Number **LG756583866**  
**PRINCESS CUT**  
**LABORATORY GROWN DIAMOND**  
**4.69 X 4.59 X 2.90 MM**  
Carat Weight **0.57 CARAT**  
Color Grade **FANCY VIVID BROWNISH PINK**  
Clarity Grade **VS 1**  
Polish **EXCELLENT**  
Symmetry **VERY GOOD**  
Fluorescence **SLIGHT**  
Inscription(s) **IGI LG756583866**  
Comments: This Laboratory Grown Diamond was created by Chemical Vapor Deposition (CVD) growth process. Indications of post-growth treatment.



THIS DOCUMENT WAS PRODUCED WITH THE FOLLOWING SECURITY MEASURES: SPECIAL DOCUMENT PAPER, INK SCREENS, WATERMARK, BACKGROUND DESIGNS, HOLOGRAM AND OTHER SECURITY FEATURES NOT LISTED AND DO EXCEED DOCUMENT SECURITY INDUSTRY GUIDELINES.

For terms & conditions and to verify this report, please visit [www.igi.org](http://www.igi.org)