



**December 18, 2025**  
**IGI Report Number LG756583862**  
**CUT CORNERED RECTANGULAR  
 MODIFIED BRILLIANT**  
**LABORATORY GROWN DIAMOND**  
**5.19 X 4.26 X 2.64 MM**  
 Carat Weight **0.57 CARAT**  
 Color Grade **FANCY VIVID  
 BROWNISH PINK**  
 Clarity Grade **VS 2**  
 Polish **VERY GOOD**  
 Symmetry **VERY GOOD**  
 Fluorescence **SLIGHT**  
 Inscription(s) **IGI LG756583862**

**LABORATORY GROWN DIAMOND REPORT**

December 18, 2025  
 IGI Report Number **LG756583862**  
 Description **LABORATORY GROWN DIAMOND**  
 Shape and Cutting Style **CUT CORNERED RECTANGULAR MODIFIED  
 BRILLIANT**  
 Measurements **5.19 X 4.26 X 2.64 MM**

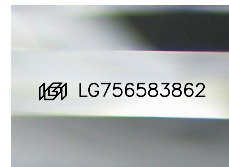
**GRADING RESULTS**

Carat Weight **0.57 CARAT**  
 Color Grade **FANCY VIVID BROWNISH PINK**  
 Clarity Grade **VS 2**

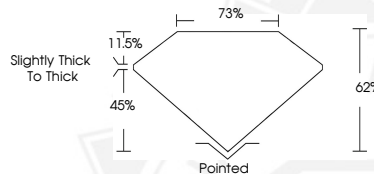
**ADDITIONAL GRADING INFORMATION**

Polish **VERY GOOD**  
 Symmetry **VERY GOOD**  
 Fluorescence **SLIGHT**  
 Inscription(s) **IGI LG756583862**

Comments: This Laboratory Grown Diamond was created by  
 Chemical Vapor Deposition (CVD) growth process.  
 Indications of post-growth treatment.



Sample Image Used



**December 18, 2025**  
**IGI Report Number LG756583862**  
**CUT CORNERED RECTANGULAR  
 MODIFIED BRILLIANT**  
**LABORATORY GROWN DIAMOND**  
**5.19 X 4.26 X 2.64 MM**  
 Carat Weight **0.57 CARAT**  
 Color Grade **FANCY VIVID  
 BROWNISH PINK**  
 Clarity Grade **VS 2**  
 Polish **VERY GOOD**  
 Symmetry **VERY GOOD**  
 Fluorescence **SLIGHT**  
 Inscription(s) **IGI LG756583862**

Comments: This Laboratory Grown  
 Diamond was created by  
 Chemical Vapor Deposition (CVD)  
 growth process. Indications of  
 post-growth treatment.

THIS DOCUMENT WAS PRODUCED WITH THE FOLLOWING SECURITY MEASURES: SPECIAL DOCUMENT PAPER, INK SCREENS, WATERMARK, BACKGROUND DESIGNS, HOLOGRAM AND OTHER SECURITY FEATURES NOT LISTED AND DO EXCEED DOCUMENT SECURITY INDUSTRY GUIDELINES.