



December 13, 2025

IGI Report Number **LG756583101**

**ROUND BRILLIANT
LABORATORY GROWN DIAMOND
4.25 - 4.29 X 2.56 MM**

Carat Weight	0.28 CARAT
Color Grade	D
Clarity Grade	I.F.
Cut Grade	EXCELLENT
Polish	EXCELLENT
Symmetry	EXCELLENT
Fluorescence	NONE
Inscription(s)	IGI LG756583101

Comments: This Laboratory Grown Diamond was created by Chemical Vapor Deposition (CVD) growth process. Type IIa

LABORATORY GROWN DIAMOND REPORT

December 13, 2025

IGI Report Number **LG756583101**

Description **LABORATORY GROWN DIAMOND**

Shape and Cutting Style **ROUND BRILLIANT**

Measurements **4.25 - 4.29 X 2.56 MM**

GRADING RESULTS

Carat Weight **0.28 CARAT**

Color Grade **D**

Clarity Grade **INTERNALLY FLAWLESS**

Cut Grade **EXCELLENT**

ADDITIONAL GRADING INFORMATION

Polish **EXCELLENT**

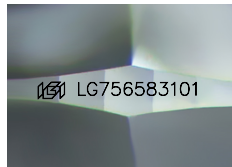
Symmetry **EXCELLENT**

Fluorescence **NONE**

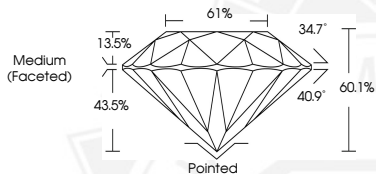
Inscription(s) **IGI LG756583101**

Comments: This Laboratory Grown Diamond was created by Chemical Vapor Deposition (CVD) growth process.

Type IIa



Sample Image Used



December 13, 2025

IGI Report Number **LG756583101**

**ROUND BRILLIANT
LABORATORY GROWN DIAMOND
4.25 - 4.29 X 2.56 MM**

Carat Weight	0.28 CARAT
Color Grade	D
Clarity Grade	I.F.
Cut Grade	EXCELLENT
Polish	EXCELLENT
Symmetry	EXCELLENT
Fluorescence	NONE
Inscription(s)	IGI LG756583101

Comments: This Laboratory Grown Diamond was created by Chemical Vapor Deposition (CVD) growth process. Type IIa



THIS DOCUMENT WAS PRODUCED WITH THE FOLLOWING SECURITY MEASURES: SPECIAL DOCUMENT PAPER, INK SCREENS, WATERMARK, BACKGROUND DESIGNS, HOLOGRAM AND OTHER SECURITY FEATURES NOT LISTED AND DO EXCEED DOCUMENT SECURITY INDUSTRY GUIDELINES.