

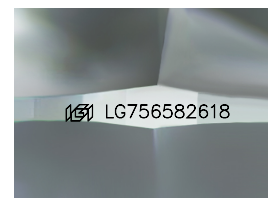
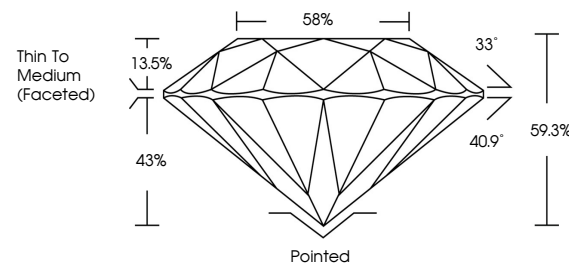


ELECTRONIC COPY

LABORATORY GROWN DIAMOND REPORT

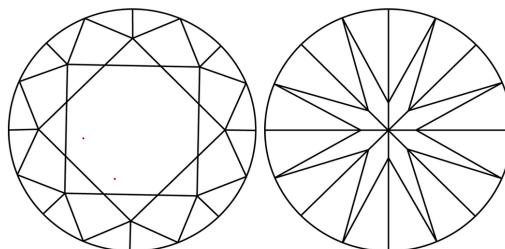
LG756582618
Report verification at igi.org

PROPORTIONS



Sample Image Used

CLARITY CHARACTERISTICS



KEY TO SYMBOLS

Red symbols indicate internal characteristics.
Green symbols indicate external characteristics.

COLOR

D E F G H I J Faint Very Light Light

CLARITY

FL	IF	VVS ¹⁻²	VS ¹⁻²	SI ¹⁻²	I ¹⁻³
Flawless	Internally Flawless	Very Very Slightly Included	Very Slightly Included	Slightly Included	Included

LABORATORY GROWN DIAMOND REPORT



December 25, 2025

IGI Report Number **LG756582618**Description **LABORATORY GROWN DIAMOND**Shape and Cutting Style **ROUND BRILLIANT**

Measurements **9.23 - 9.26 X 5.48 MM**

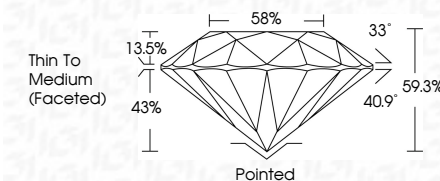
GRADING RESULTS

Carat Weight **2.81 CARATS**

Color Grade	E
-------------	---

Clarity Grade VVS 2

Cut Grade **IDEAL**



ADDITIONAL GRADING INFORMATION

Polish EXCELLENT

Symmetry **EXCELLENT**

Fluorescence NONI

Inscription(s) LG756582618

Comments: This Laboratory Grown Diamond was created by Chemical Vapor Deposition (CVD) growth process.
Type IIa



© IGI 2020, International Gemological Institute

FD - 10 20



THIS DOCUMENT WAS PRODUCED WITH THE FOLLOWING SECURITY MEASURES: SPECIAL DOCUMENT PAPER, INK SCREENS, WATERMARK, BACKGROUND DESIGNS, HOLOGRAM AND OTHER SECURITY FEATURES NOT LISTED AND DO EXCEED DOCUMENT SECURITY INDUSTRY GUIDELINES

www.igi.org

December 25, 2025
IGI Report No LG756582618
ROUND BRILLIANT

9.23 - 9.26 X 5.48 MM	2.81 CARATS
Carat Weight	VVS 2
Color Grade	IDEAL
Clarity Grade	59.3%
Cut Grade	58%
Depth	Thin To Medium
Table	(Faceted)
Girdle	Pointed
Culet	EXCELLENT
Polish	EXCELLENT
Symmetry	EXCELLENT
Fluorescence	NONE
Identification	AGS I276590118

Comments:
This Laboratory Grown Diamond was created by Chemical Vapor Deposition (CVD) growth process.