



**ELECTRONIC COPY**

LG756582305  
Report verification at igi.org



December 25, 2025  
IGI Report Number **LG756582305**  
Description **LABORATORY GROWN DIAMOND**  
Shape and Cutting Style **CUSHION MODIFIED BRILLIANT**  
Measurements **10.31 X 6.55 X 4.07 MM**  
**GRADING RESULTS**  
Carat Weight **2.56 CARATS**  
Color Grade **F**  
Clarity Grade **VVS 2**

December 25, 2025  
IGI Report Number **LG756582305**  
Description **LABORATORY GROWN DIAMOND**  
Shape and Cutting Style **CUSHION MODIFIED BRILLIANT**  
Measurements **10.31 X 6.55 X 4.07 MM**

**GRADING RESULTS**

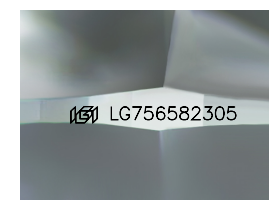
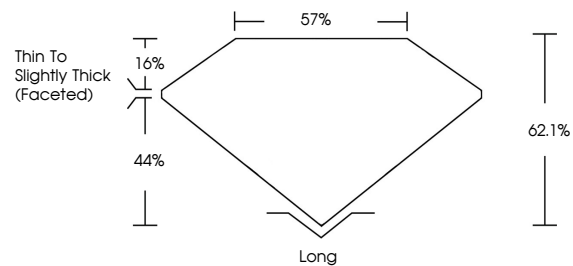
Carat Weight **2.56 CARATS**  
Color Grade **F**  
Clarity Grade **VVS 2**

**ADDITIONAL GRADING INFORMATION**

Polish **EXCELLENT**  
Symmetry **EXCELLENT**  
Fluorescence **NONE**  
Inscription(s) **IGI LG756582305**

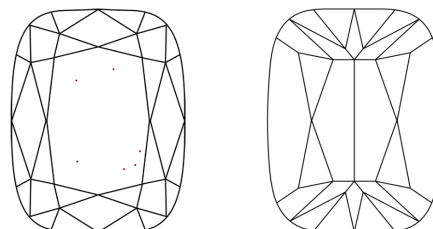
Comments: This Laboratory Grown Diamond was created by Chemical Vapor Deposition (CVD) growth process. Type IIa

**PROPORTIONS**



Sample Image Used

**CLARITY CHARACTERISTICS**



**KEY TO SYMBOLS**

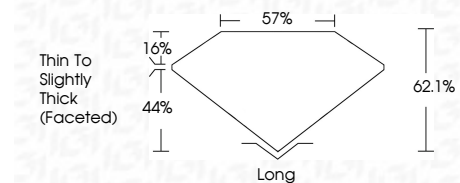
Red symbols indicate internal characteristics.  
Green symbols indicate external characteristics.

**COLOR**

D E F G H I J Faint Very Light Light

**CLARITY**

FL	IF	VVS <sup>1-2</sup>	VS <sup>1-2</sup>	SI <sup>1-2</sup>	I <sup>1-3</sup>
Flawless	Internally Flawless	Very Very Slightly Included	Very Slightly Included	Slightly Included	Included



**ADDITIONAL GRADING INFORMATION**

Polish **EXCELLENT**  
Symmetry **EXCELLENT**  
Fluorescence **NONE**  
Inscription(s) **IGI LG756582305**  
Comments: This Laboratory Grown Diamond was created by Chemical Vapor Deposition (CVD) growth process. Type IIa



December 25, 2025  
IGI Report No LG756582305  
**CUSHION MODIFIED BRILLIANT**  
**10.31 X 6.55 X 4.07 MM**  
Carat Weight **2.56 CARATS**  
Color Grade **F**  
Clarity Grade **VVS 2**  
Depth **62.1%**  
Table **16%**  
Girdle **44%**  
Culet **Thin To Slightly Thick (Faceted)**  
Long **Long**  
Polish **EXCELLENT**  
Symmetry **EXCELLENT**  
Fluorescence **NONE**  
Inscription(s) **IGI LG756582305**  
Comments: This Laboratory Grown Diamond was created by Chemical Vapor Deposition (CVD) growth process. Type IIa