

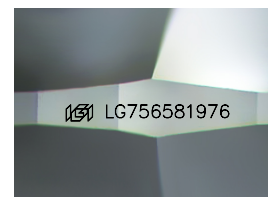
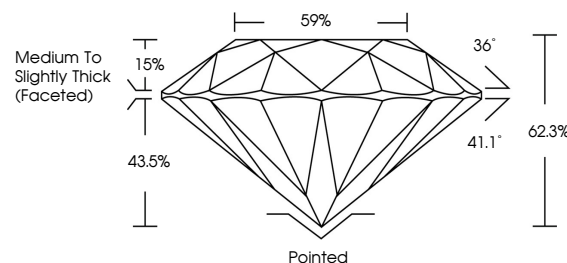


**ELECTRONIC COPY**

## LABORATORY GROWN DIAMOND REPORT

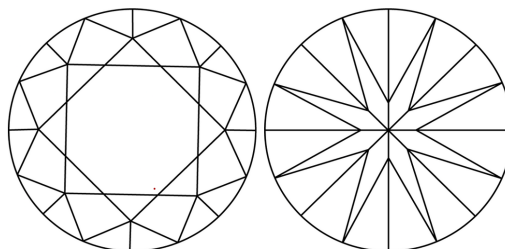
LG756581976  
Report verification at [igi.org](http://igi.org)

## PROPORTIONS



Sample Image Used

## CLARITY CHARACTERISTICS



## KEY TO SYMBOLS

Red symbols indicate internal characteristics.  
Green symbols indicate external characteristics.

## COLOR

D E F G H I J Faint Very Light Light

## CLARITY

FL	IF	VVS <sup>1-2</sup>	VS <sup>1-2</sup>	SI <sup>1-2</sup>	I <sup>1-3</sup>
Flawless	Internally Flawless	Very Very Slightly Included	Very Slightly Included	Slightly Included	Included

## LABORATORY GROWN DIAMOND REPORT



December 24, 2025

IGI Report Number LG756581976

Description **LABORATORY GROWN DIAMOND**Shape and Cutting Style **ROUND BRILLIANT**

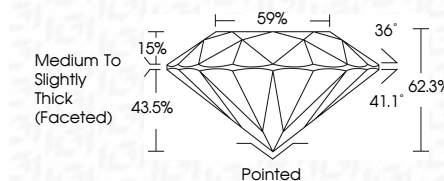
Measurements 8.08 - 8.14 X 5.06 MM

## GRADING RESULTS

Carat Weight **2.07 CARATS**

Color Grade **E**Clarity Grade WS 2

Cut Grade **IDEAL**



### ADDITIONAL GRADING INFORMATION

Polish EXCELLENT

Symmetry **EXCELLENT**

Fluorescence NON

Inscription(s)  LG756581976

Comments: This Laboratory Grown Diamond was created by Chemical Vapor Deposition (CVD) growth process.  
Type IIa



© IGI 2020, International Gemological Institute

FD - 10 20

**www.igi.org**

THIS DOCUMENT WAS PRODUCED WITH THE FOLLOWING SECURITY MEASURES: SPECIAL DOCUMENT PAPER, INK SCREENS, WATERMARK, BACKGROUND DESIGNS, HOLOGRAM AND OTHER SECURITY FEATURES NOT LISTED AND DO EXCEED DOCUMENT SECURITY INDUSTRY GUIDELINE

December 24, 2025  
IGI Report No LG756581976  
ROUND BRILLIANT

ROUND BRILLIANT	2.07 CARATS	2.07 CARATS
Color	VVS 2	VVS 2
Clarity	IDEAL	IDEAL
Weight	62.3%	62.3%
Carat Weight	59%	59%
Color Grade	Medium to Slightly Dark	Medium to Slightly Dark
Clarity Grade	Excellent	Excellent
Cut Grade	Excellent	Excellent
Depth	Excellent	Excellent
Table	Excellent	Excellent
Girdle	Excellent	Excellent
Polish	Excellent	Excellent
Symmetry	Excellent	Excellent
Fluorescence	None	None
Report	IGI	IGI

**Comments:**  
This Laboratory Grown Diamond was  
created by Chemical Vapor Deposition  
(CVD) growth process.