



**ELECTRONIC COPY**

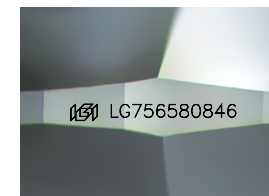
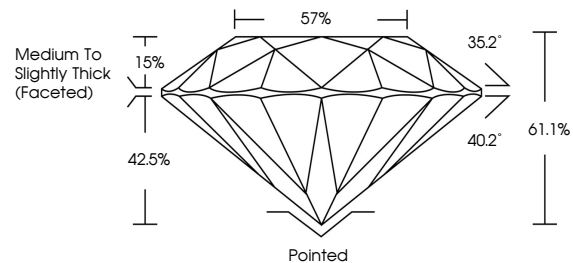
LG756580846  
Report verification at igi.org



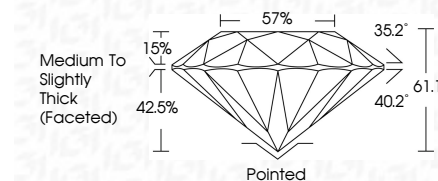
January 19, 2026  
IGI Report Number **LG756580846**  
Description **LABORATORY GROWN DIAMOND**  
Shape and Cutting Style **ROUND BRILLIANT**  
Measurements **7.94 - 7.97 X 4.86 MM**  
**GRADING RESULTS**  
Carat Weight **1.92 CARAT**  
Color Grade **FANCY VIVID BLUE**  
Clarity Grade **VVS 1**  
Cut Grade **IDEAL**

January 19, 2026  
IGI Report Number **LG756580846**  
Description **LABORATORY GROWN DIAMOND**  
Shape and Cutting Style **ROUND BRILLIANT**  
Measurements **7.94 - 7.97 X 4.86 MM**  
**GRADING RESULTS**  
Carat Weight **1.92 CARAT**  
Color Grade **FANCY VIVID BLUE**  
Clarity Grade **VVS 1**  
Cut Grade **IDEAL**

**PROPORTIONS**



Sample Image Used



**ADDITIONAL GRADING INFORMATION**  
Polish **EXCELLENT**  
Symmetry **EXCELLENT**  
Fluorescence **NONE**  
Inscription(s) **IGI LG756580846**

Comments: This Laboratory Grown Diamond was created by High Pressure High Temperature (HPHT) growth process. Indications of post-growth treatment.

**COLOR**

D E F G H I J Faint Very Light Light

**CLARITY**

FL	IF	VVS <sup>1-2</sup>	VS <sup>1-2</sup>	SI <sup>1-2</sup>	I <sup>1-3</sup>
Flawless	Internally Flawless	Very Very Slightly Included	Very Slightly Included	Slightly Included	Included

**ADDITIONAL GRADING INFORMATION**

Polish **EXCELLENT**  
Symmetry **EXCELLENT**  
Fluorescence **NONE**  
Inscription(s) **IGI LG756580846**  
Comments: This Laboratory Grown Diamond was created by High Pressure High Temperature (HPHT) growth process. Indications of post-growth treatment.



**IGI**



January 19, 2026  
IGI Report No LG756580846  
ROUND BRILLIANT  
7.94 - 7.97 X 4.86 MM  
1.92 CARAT  
FANCY VIVID BLUE  
VVS 1  
IDEAL  
61.1%  
57%  
Medium To Slightly Thick (Faceted)  
Pointed  
EXCELLENT  
EXCELLENT  
NONE  
IGI LG756580846  
Comments: This Laboratory Grown Diamond was created by High Pressure High Temperature (HPHT) growth process. Indications of post-growth treatment.