



ELECTRONIC COPY

LG756580461
Report verification at igi.org



February 2, 2026

IGI Report Number LG756580461

Description LABORATORY GROWN DIAMOND

Shape and Cutting Style ROUND BRILLIANT

Measurements 7.28 - 7.30 X 4.59 MM

GRADING RESULTS

Carat Weight 1.51 CARAT

Color Grade E

Clarity Grade VVS 1

Cut Grade EXCELLENT

February 2, 2026

IGI Report Number LG756580461

Description LABORATORY GROWN DIAMOND

Shape and Cutting Style ROUND BRILLIANT

Measurements 7.28 - 7.30 X 4.59 MM

GRADING RESULTS

Carat Weight 1.51 CARAT

Color Grade E

Clarity Grade VVS 1

Cut Grade EXCELLENT

ADDITIONAL GRADING INFORMATION

Polish EXCELLENT

Symmetry EXCELLENT

Fluorescence NONE

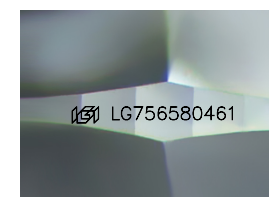
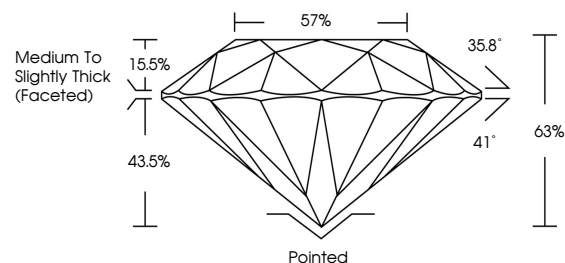
Inscription(s) IGI LG756580461

Comments: As Grown - No indication of post-growth treatment.

This Laboratory Grown Diamond was created by High Pressure High Temperature (HPHT) growth process.

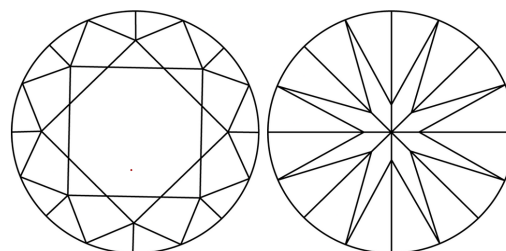
Type II

PROPORTIONS



Sample Image Used

CLARITY CHARACTERISTICS



KEY TO SYMBOLS

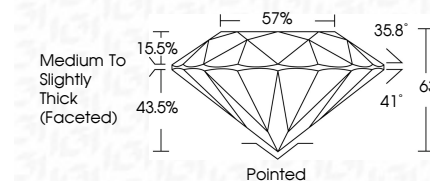
Red symbols indicate internal characteristics. Green symbols indicate external characteristics.

COLOR

D E F G H I J Faint Very Light Light

CLARITY

FL IF VVS 1-2 VS 1-2 SI 1-2 I 1-3
Flawless Internally Flawless Very Very Slightly Included Very Slightly Included Slightly Included Included



ADDITIONAL GRADING INFORMATION

Polish EXCELLENT

Symmetry EXCELLENT

Fluorescence NONE

Inscription(s) IGI LG756580461

Comments: As Grown - No indication of post-growth treatment.

This Laboratory Grown Diamond was created by High Pressure High Temperature (HPHT) growth process.

Type II



IGI



Summary table of report details: February 2, 2026, IGI Report No LG756580461, ROUND BRILLIANT, 7.28 - 7.30 X 4.59 MM, 1.51 CARAT, E, VVS 1, EXCELLENT, 63%, 57%, Medium To Slightly Thick (Faceted), Pointed, EXCELLENT, EXCELLENT, NONE, IGI LG756580461