



**ELECTRONIC COPY**

## LABORATORY GROWN DIAMOND REPORT

January 8, 2026	
IGI Report Number	LG756580225
Description	LABORATORY GROWN DIAMOND
Shape and Cutting Style	ROUND BRILLIANT
Measurements	8.02 - 8.06 X 4.94 MM

## GRADING RESULTS

Carat Weight	2.01 CARATS
Color Grade	FANCY VIVID BLUE
Clarity Grade	VVS 2
Cut Grade	EXCELLENT

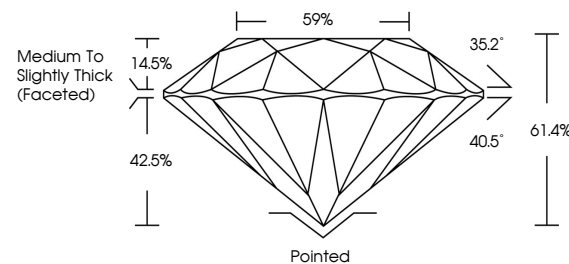
### ADDITIONAL GRADING INFORMATION

Polish	EXCELLENT
Symmetry	EXCELLENT
Fluorescence	NONE
Inscription(s)	 LG756580225

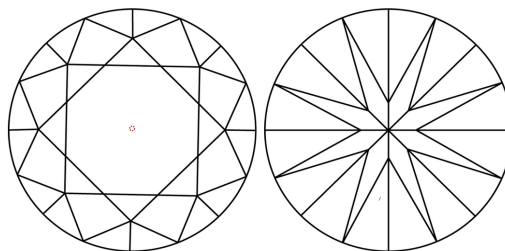
Comments: This Laboratory Grown Diamond was created by Chemical Vapor Deposition (CVD) growth process.  
Indications of post-growth treatment.

LG756580225  
Report verification at [igi.org](https://igi.org)

## PROPORTIONS

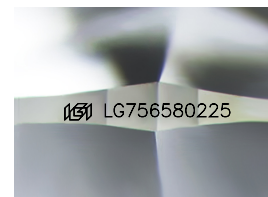


## CLARITY CHARACTERISTICS



## KEY TO SYMBOLS

Red symbols indicate internal characteristics.  
Green symbols indicate external characteristics.



Sample Image Used

## COLOR

D E F G H I J Faint Very Light Light

## CLARITY

FL	IF	VVS <sup>1-2</sup>	VS <sup>1-2</sup>	SI <sup>1-2</sup>	I <sup>1-3</sup>
Flawless	Internally Flawless	Very Very Slightly Included	Very Slightly Included	Slightly Included	Included

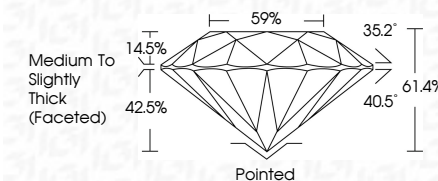
## LABORATORY GROWN DIAMOND REPORT



January 8, 2026	
IGI Report Number	LG756580225
Description	LABORATORY GROWN DIAMOND
Shape and Cutting Style	ROUND BRILLIANT
Measurements	8.02 - 8.06 X 4.94 MM

## GRADING RESULTS

Carat Weight	2.01 CARATS
Color Grade	FANCY VIVID BLUE
Clarity Grade	VVS 2
Cut Grade	EXCELLENT



### ADDITIONAL GRADING INFORMATION

Polish	EXCELLENT
Symmetry	EXCELLENT
Fluorescence	NONE
Inscription(s)	 LG756580225

Comments: This Laboratory Grown Diamond was created by Chemical Vapor Deposition (CVD) growth process.  
Indications of post-growth treatment.



© IGI 2020, International Gemological Institute

FD - 10 20

**www.igi.org**



THIS DOCUMENT WAS PRODUCED WITH THE FOLLOWING SECURITY MEASURES: SPECIAL DOCUMENT PAPER, INK SCREENS, WATERMARK, BACKGROUND DESIGNS, HOLOGRAM AND OTHER SECURITY FEATURES NOT LISTED AND DO EXCEED DOCUMENT SECURITY INDUSTRY GUIDELINE

January 8, 2026  
GI Report No LG756580225  
POIND BRILLIANT

0.02 - 8.06 X 4.94 MM	Carat Weight	2.01 CARATS
	Color Grade	FANCY VIVID BLUE
	Clarity Grade	VVS 2
	Depth	EXCELLENT
	Table	61.4%
	Girdle	59%
	Culet	Medium to Slightly Thick (Faceted)
	Polish	Pointed
	Symmetry	EXCELLENT
	Fluorescence	EXCELLENT
		NONE

**Comments:**  
This Laboratory Grown Diamond was created by Chemical Vapor Deposition (CVD) growth process.