

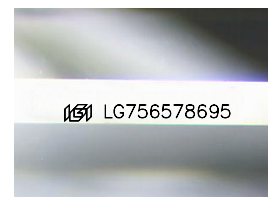
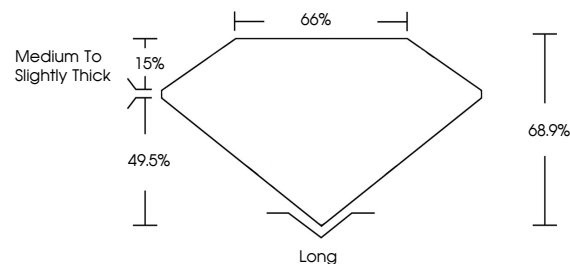


**ELECTRONIC COPY**

## LABORATORY GROWN DIAMOND REPORT

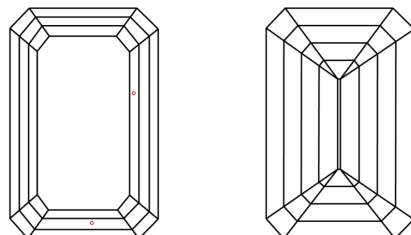
LG756578695  
Report verification at [igi.org](https://igi.org)

## PROPORTIONS



Sample Image Used

## CLARITY CHARACTERISTICS



### KEY TO SYMBOLS

Red symbols indicate internal characteristics.  
Green symbols indicate external characteristics.

## COLOR

D E F G H I J Faint Very Light Light

## CLARITY

FL	IF	VVS <sup>1-2</sup>	VS <sup>1-2</sup>	SI <sup>1-2</sup>	I <sup>1-3</sup>
Flawless	Internally Flawless	Very Very Slightly Included	Very Slightly Included	Slightly Included	Included

## LABORATORY GROWN DIAMOND REPORT



December 16, 2025

IGI Report Number **LG756578695**Description **LABORATORY GROWN DIAMOND**Shape and Cutting Style **EMERALD CUT**

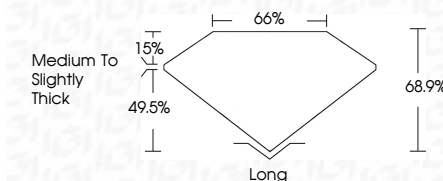
Measurements **9.75 X 6.71 X 4.62 MM**

## GRADING RESULTS

Carat Weight **2.99 CARATS**

Color Grade E

Clarity Grade VS 2



### ADDITIONAL GRADING INFORMATION

Polish **EXCELLENT**

Symmetry **EXCELLENT**

Fluorescence **NONE**Inscription(s)  LG756578695

Comments: This Laboratory Grown Diamond was created by Chemical Vapor Deposition (CVD) growth process.  
Type IIa



© IGI 2020, International Gemological Institute

FD - 10 20

**www.igi.org**

THIS DOCUMENT WAS PRODUCED WITH THE FOLLOWING SECURITY MEASURES: SPECIAL DOCUMENT PAPER, INK SCREENS, WATERMARK, BACKGROUND DESIGNS, HOLOGRAM AND OTHER SECURITY FEATURES NOT LISTED AND DO EXCEED DOCUMENT SECURITY INDUSTRY GUIDELINE

December 16, 2025  
GI Report No LG756578695

<p> <b>GL Report No. LG785076905</b>  <b>REBAND CUT</b>  <b>75 X 6.11 X 4.42 MM</b> </p>	<p> <b>2.99 CARATS</b>  <b>E</b>  <b>VS 2</b>  <b>68.9%</b>  <b>65%</b>  <b>Medium To Slightly</b>  <b>inck</b> </p>	<p> <b>Long</b>  <b>Excellent</b>  <b>Excellent</b>  <b>None</b>  <b>681 (G785076905)</b> </p>
--	--	--

**Comments:**  
This Laboratory Grown Diamond was created by Chemical Vapor Deposition (CVD) growth process.